

ESDIR Logroño, Spain Workshop 18.11 – 22.11. 2024

# LIGHT DARK CLOSE FAR

**light creating the image of space**

A surface evoking specific light events with its transparency.

A rhythmic composition illustrating spatial depth.

The arrangement is highlighted by light falling from behind.

ESDIR Logroño, Spain Workshop 18.11 – 22.11. 2024

# LIGHT DARK CLOSE FAR

**Exercise presenting the issues of spatial depth and the role of light, as well as the issue of proportion and the primary role of composition in design.**

Sunlight, same as all the creatures of Nature, has beauty and mystery imprinted in itself. It seems that the important task of a designer is a conscious use of light matter while building compositions.

Natural light is easily accessible - it is a matter constantly present in the world, it can be used at any time. When light is used wisely, it can carry deep and essential contents.

Nowadays, especially when living in a city, we spend most of our lives surrounded by artificial lighting and flat screens displaying an illusory space. Contact with the real space of the world of Nature and natural light is increasingly minimized. Therefore, an important task in design seems to be the way of creative listening to Nature and the ability to use the material of sunlight with all its richness.

ESDIR Logroño, Spain Workshop 18.11 – 22.11. 2024

# LIGHT DARK CLOSE FAR

**An important intention is to:**

- draw attention to the value of manual activities - hand drawing and three-dimensional modeling allowing for a multi-sensory experience of an artistic composition along with the materials shaping it and the key role of light.
- stimulate the conscious use of the artistic language throughout the entire design process - from observation through understanding and artistic synthesis to the design concept and implementation of the final work.
- use the matter of light creatively understanding the universality of benefiting from natural light in design.

ESDIR Logroño, Spain Workshop 18.11 – 22.11. 2024

# LIGHT DARK CLOSE FAR

## students

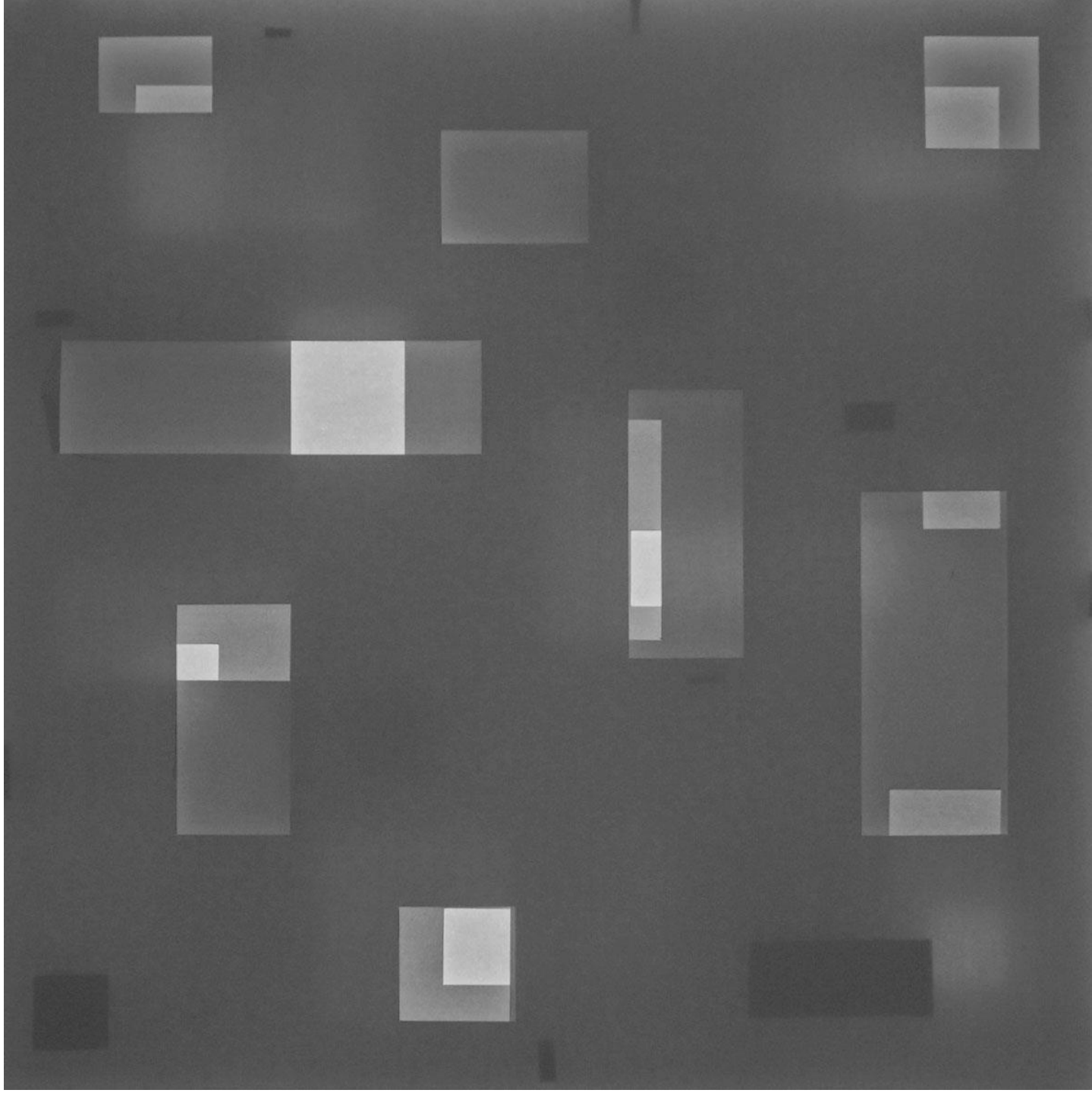
- |                               |                 |
|-------------------------------|-----------------|
| 1. Lydia García Fernández     | Interior design |
| 2. Gabriela Mures             | Interior design |
| 3. Ane Franco López de Uralde | Interior design |
| 4. Iraitz Peribáñez Sánchez   | Interior design |
| 5. Cristina Eleta Olagüe      | Fashion design  |
| 6. Ventura Sánchez Del Pueyo  | Fashion design  |
| 7. Natalia Lasa Souza         | Product design  |
| 8. Candela Domínguez Herce    | Product design  |
| 9. Wiktoría Natalia Ciez      | Graphic design  |
| 10. Irene Duval Duval         | Graphic design  |
| 11. Clara Gil Sansinena       | Graphic design  |
| 12. Diana Arteaga             | CCS Detroit     |

## teacher

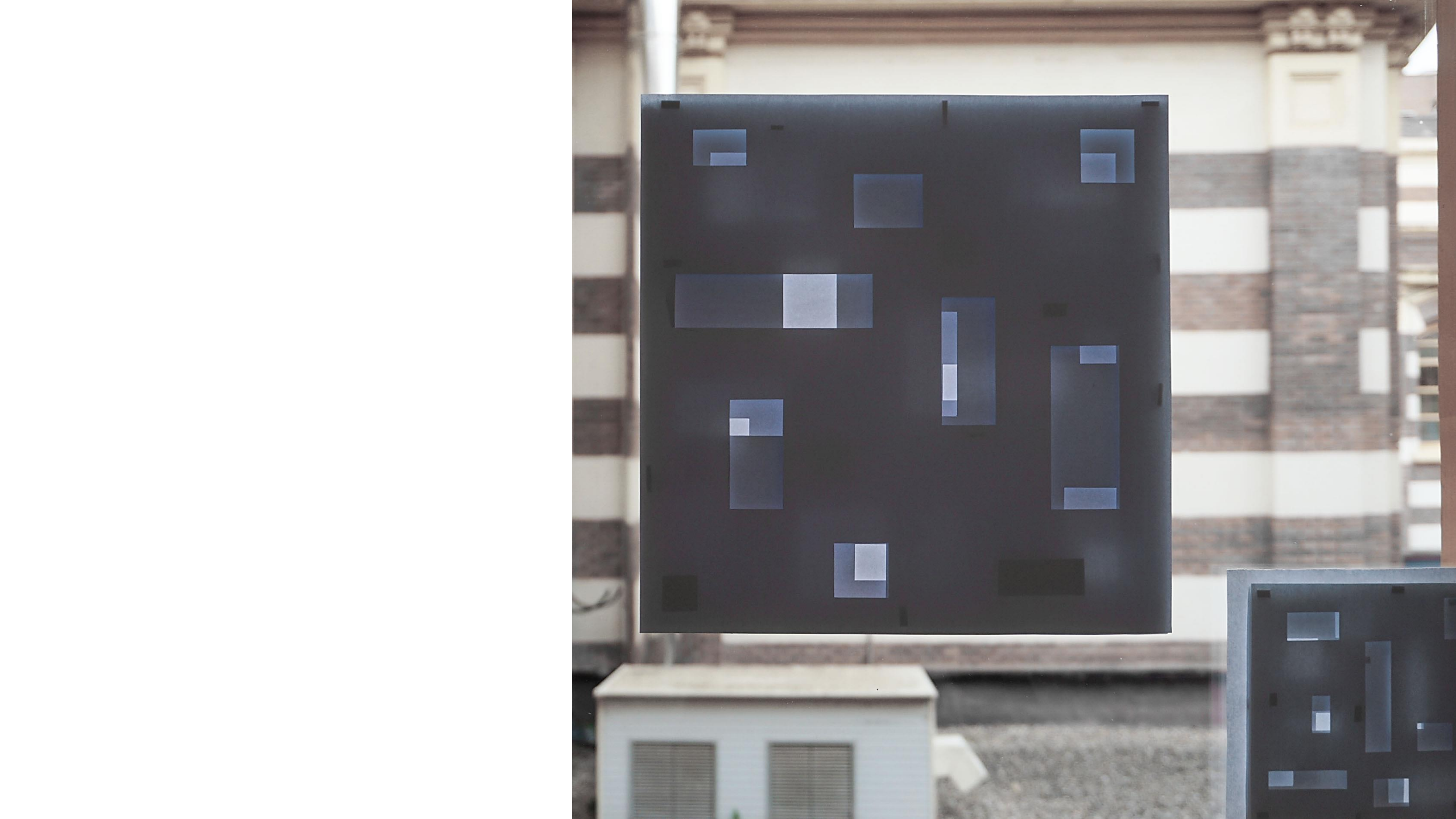
Katarzyna Bucholc  
Ph.D. in Fine Arts  
Faculty of Interior Design  
Academy of Fine Arts in Warsaw, Poland

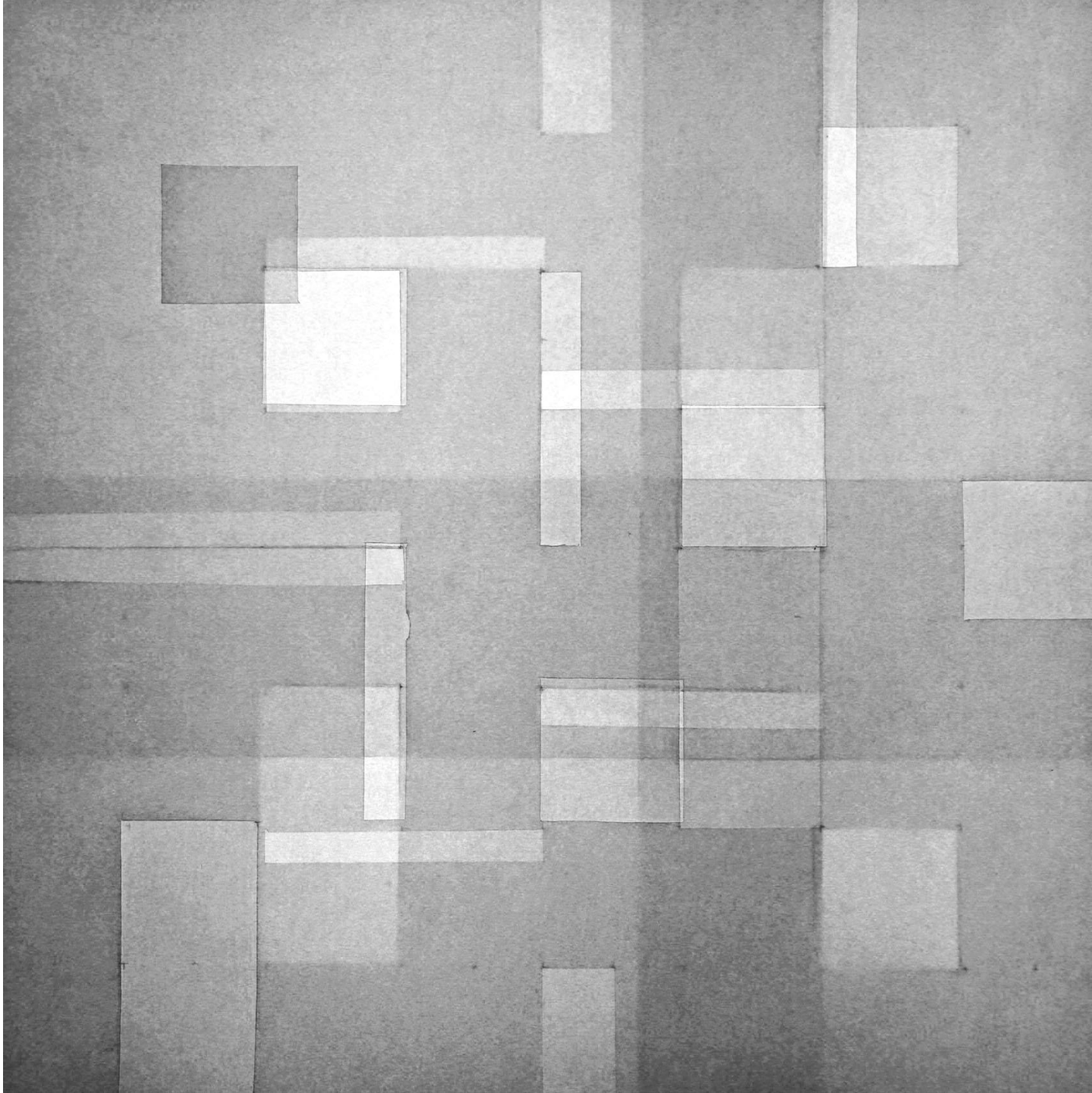
tel.502815884  
[katarzyna.bucholc@asp.waw.pl](mailto:katarzyna.bucholc@asp.waw.pl)





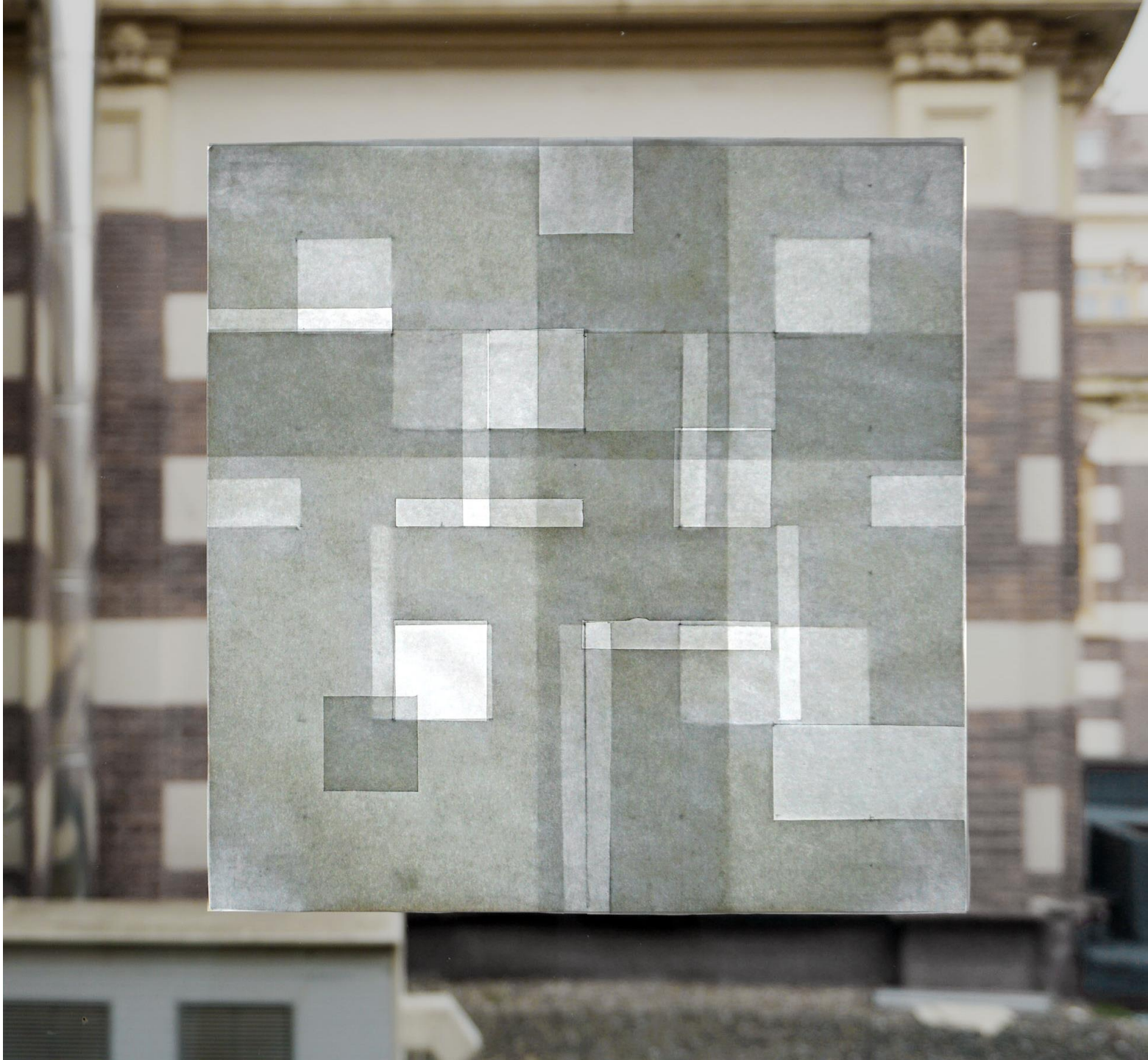
Lydia García Fernández



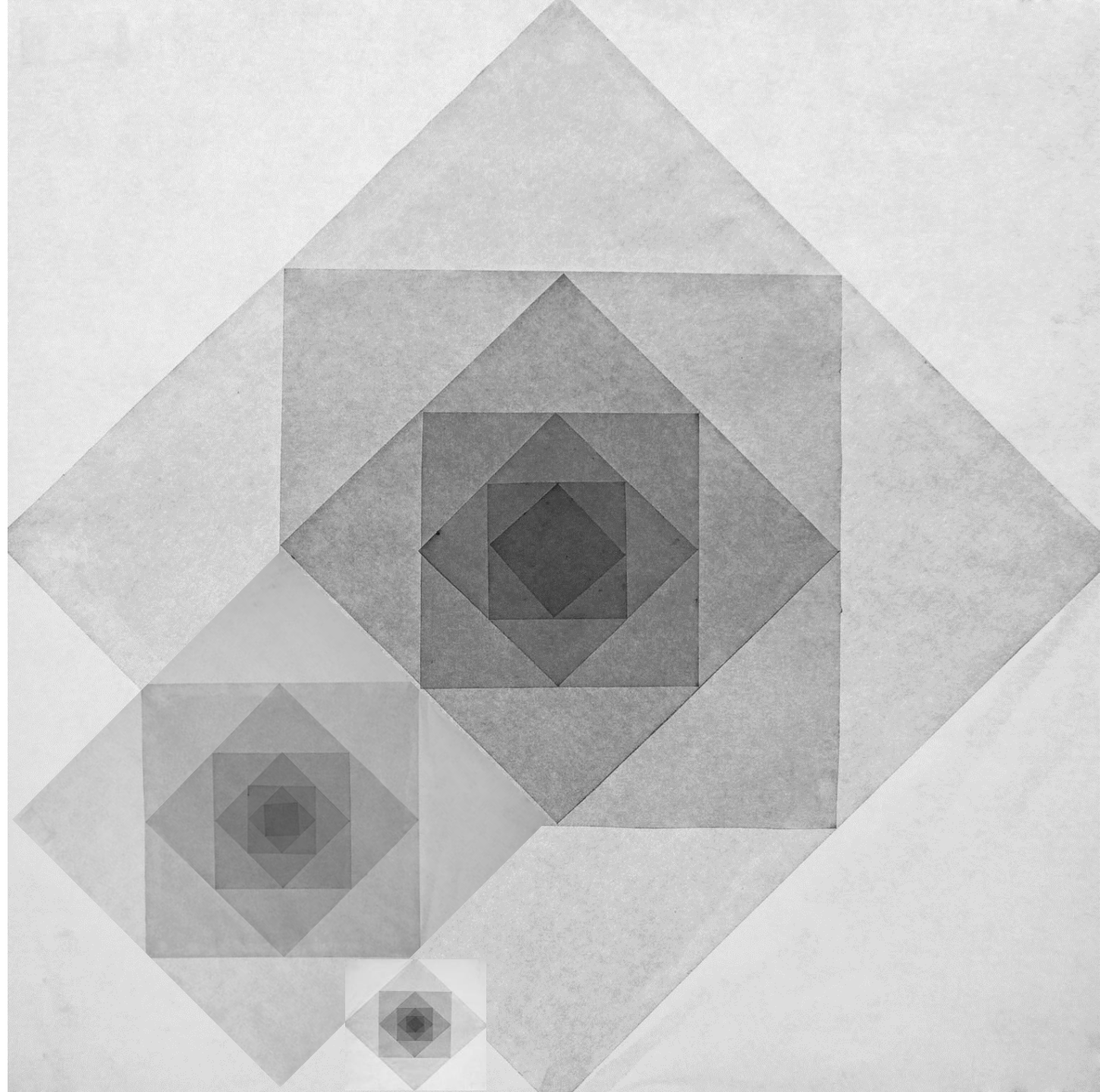


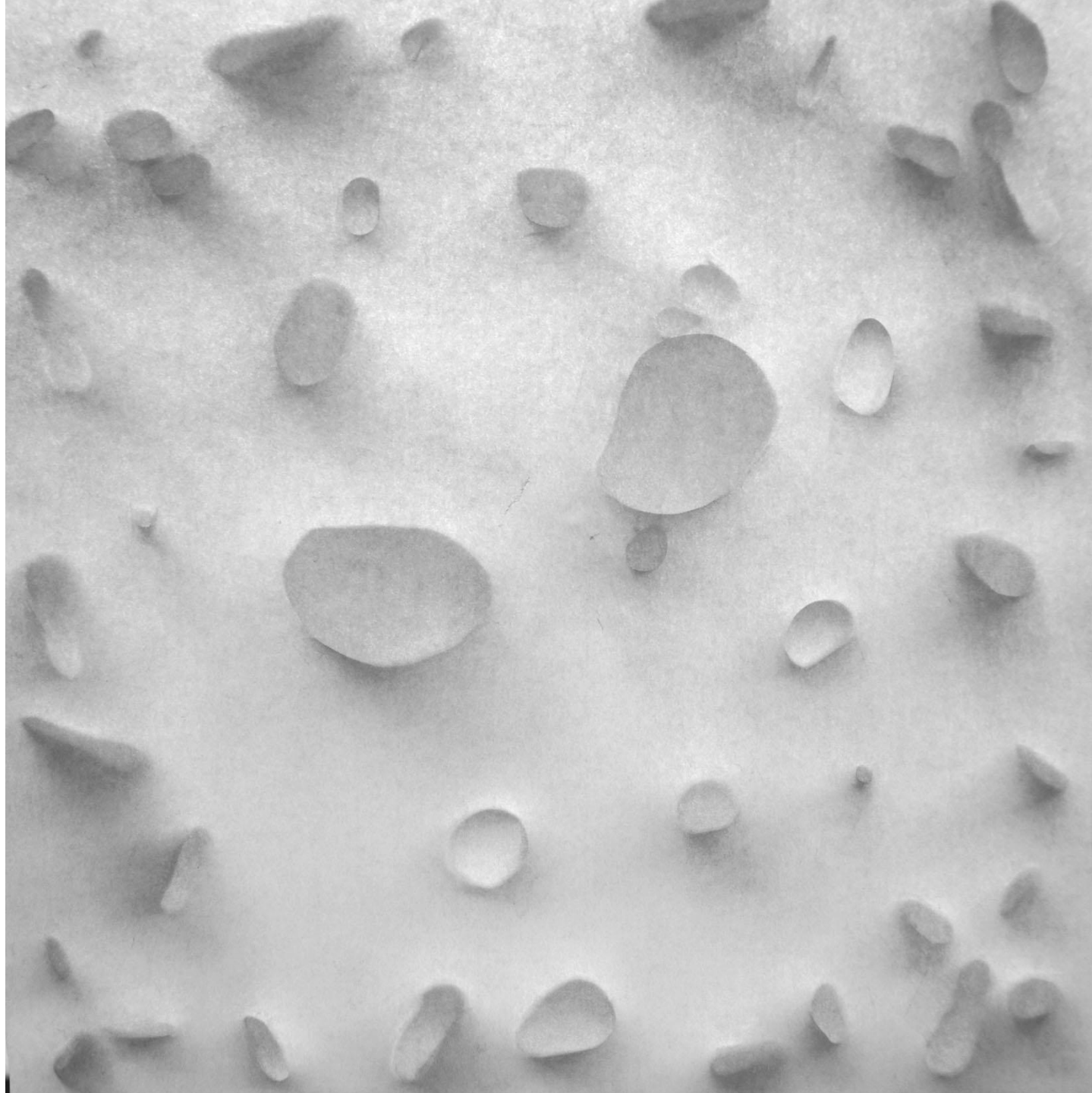
Gabriela Mures





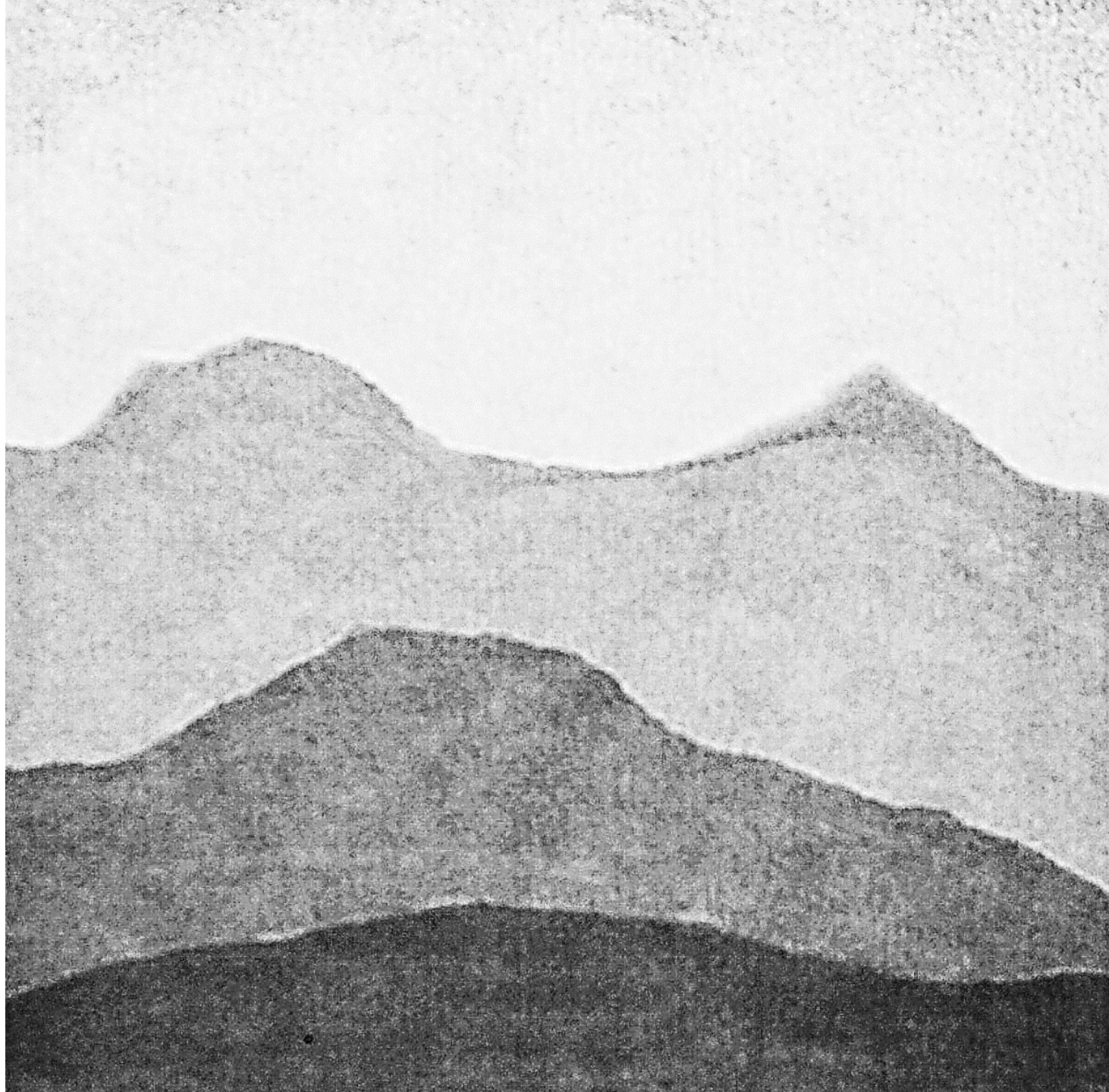
Lydia García Fernández



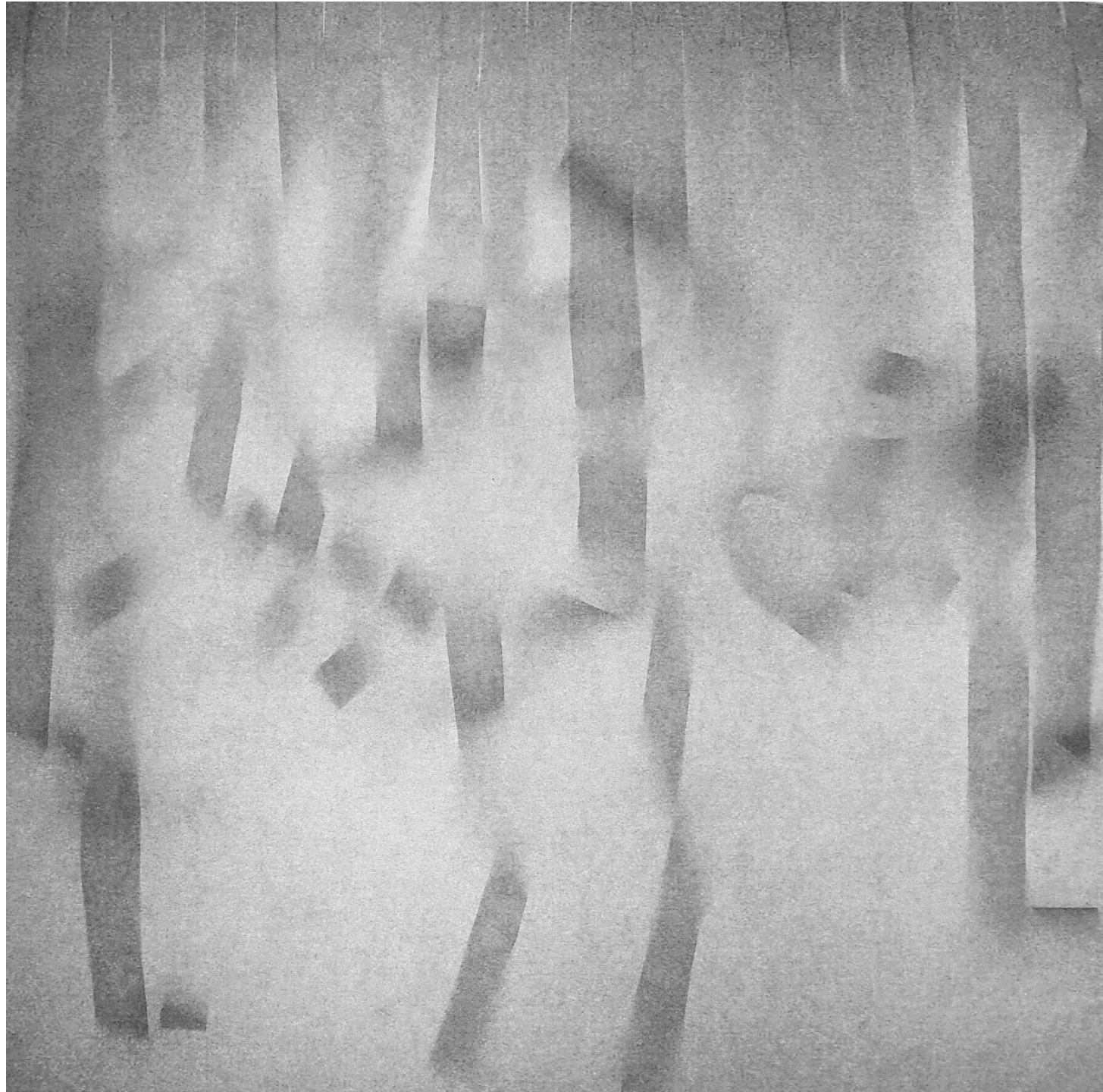




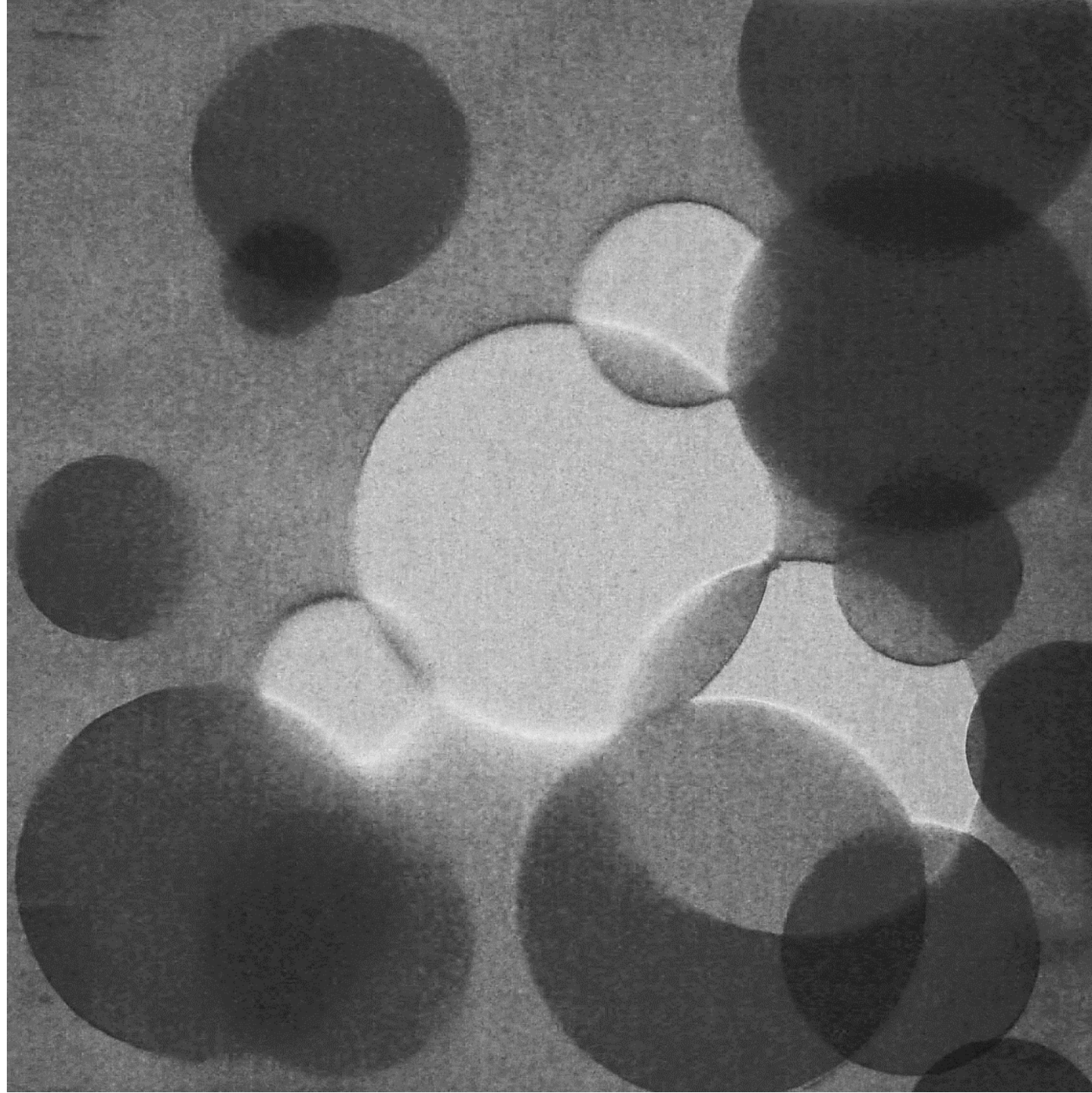
Iraitz Peribáñez Sánchez



Gabriela Mures

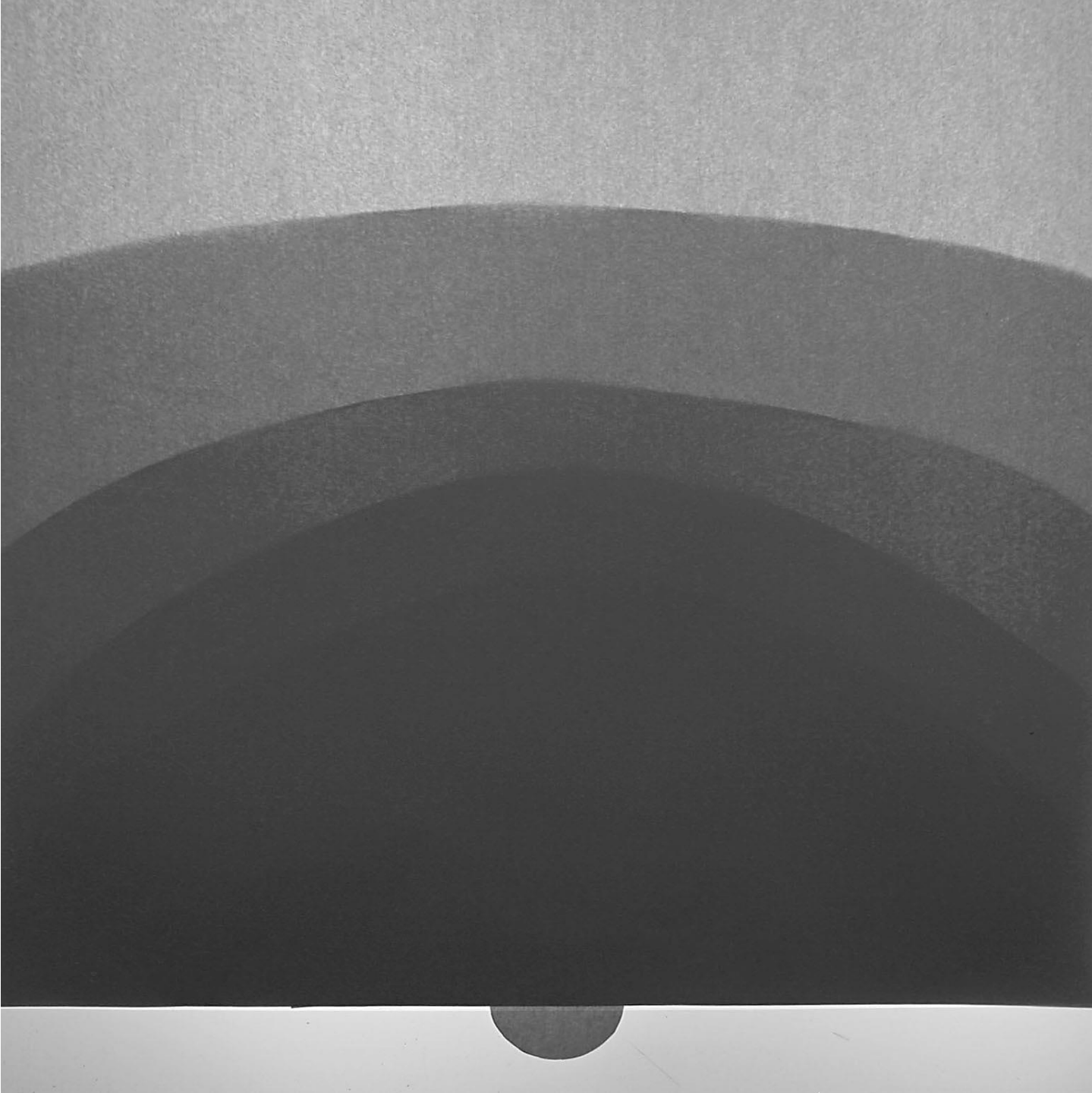


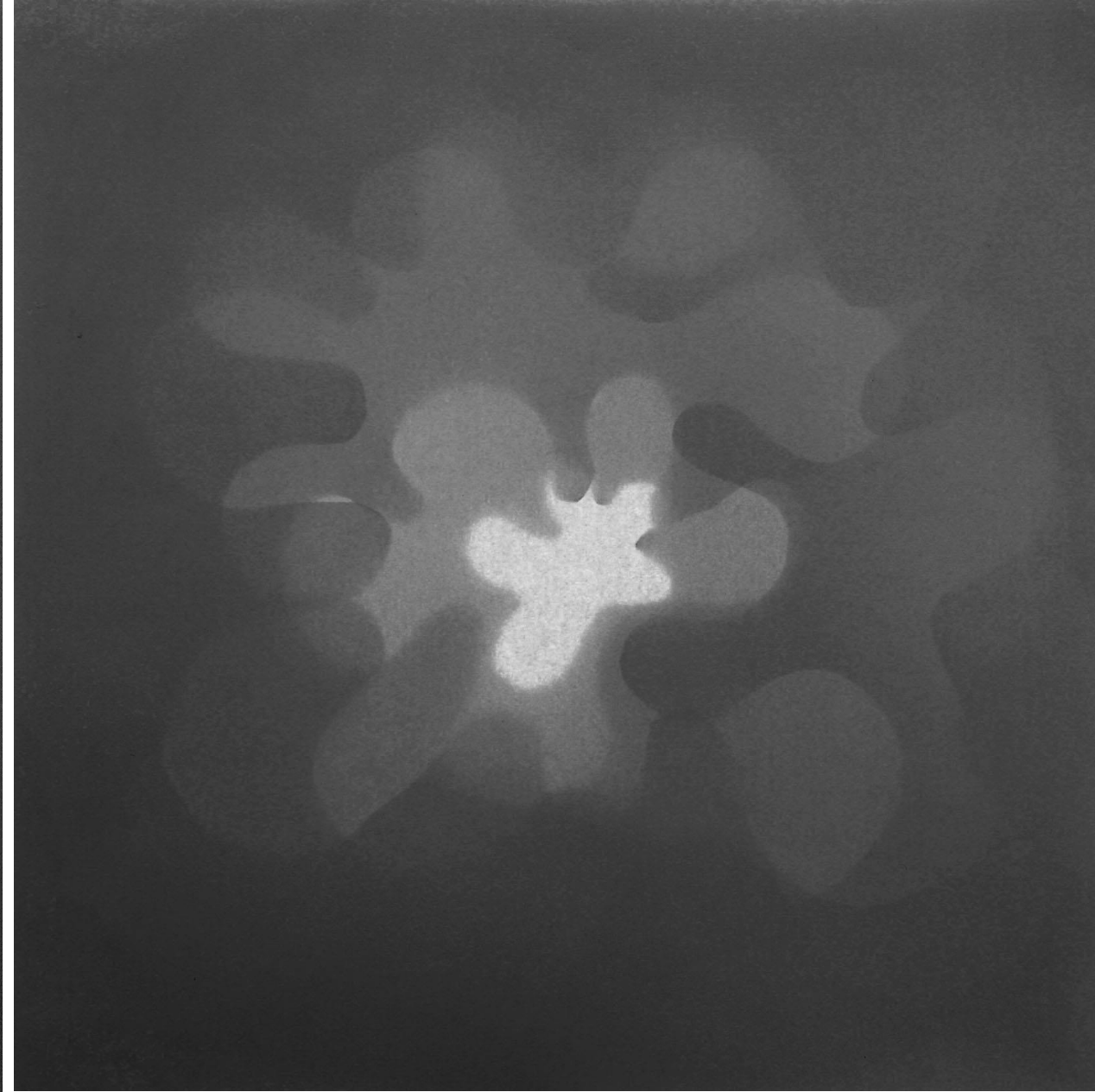
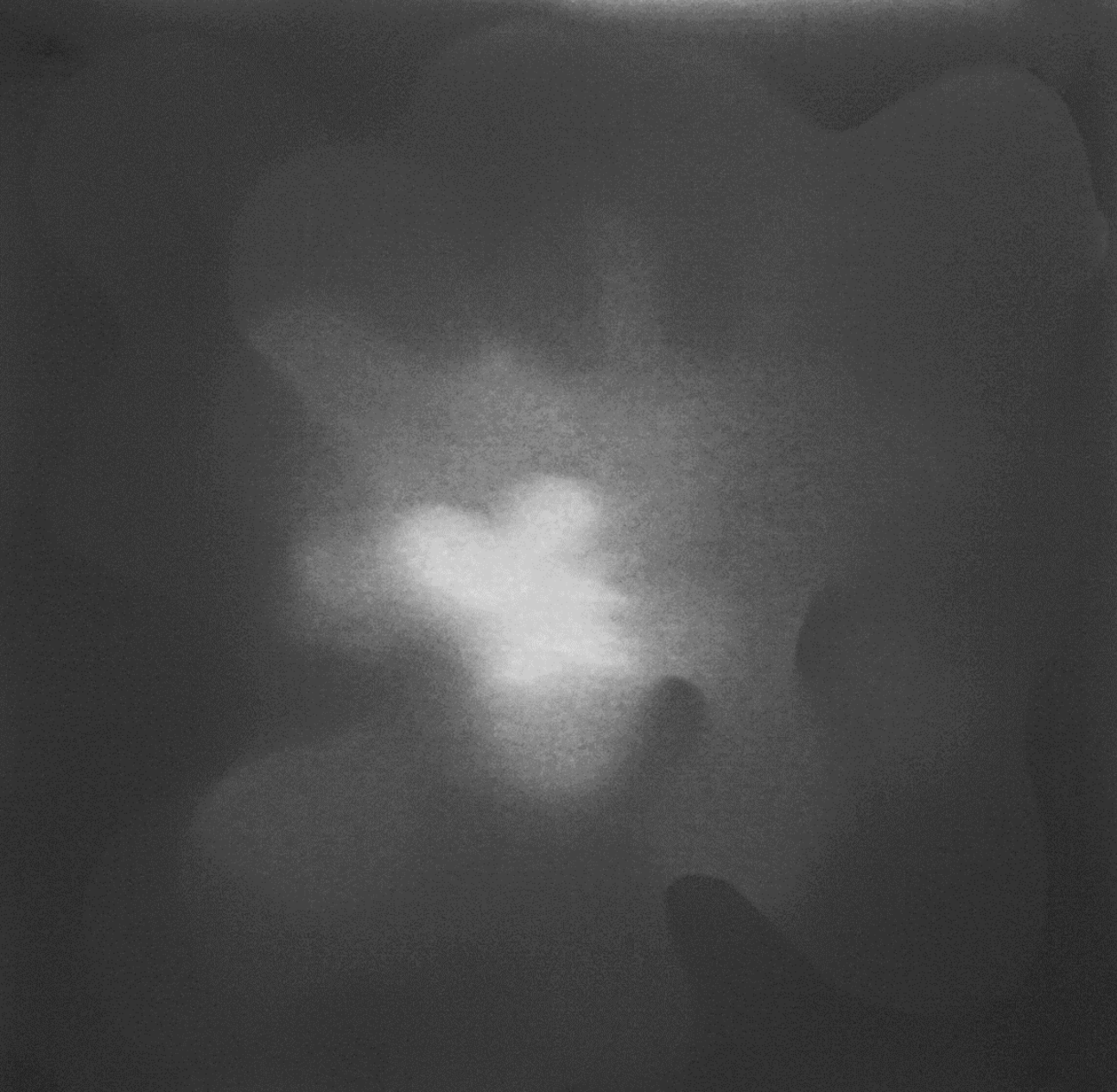




Irene Duval Duval

Clara Gil Sansinena



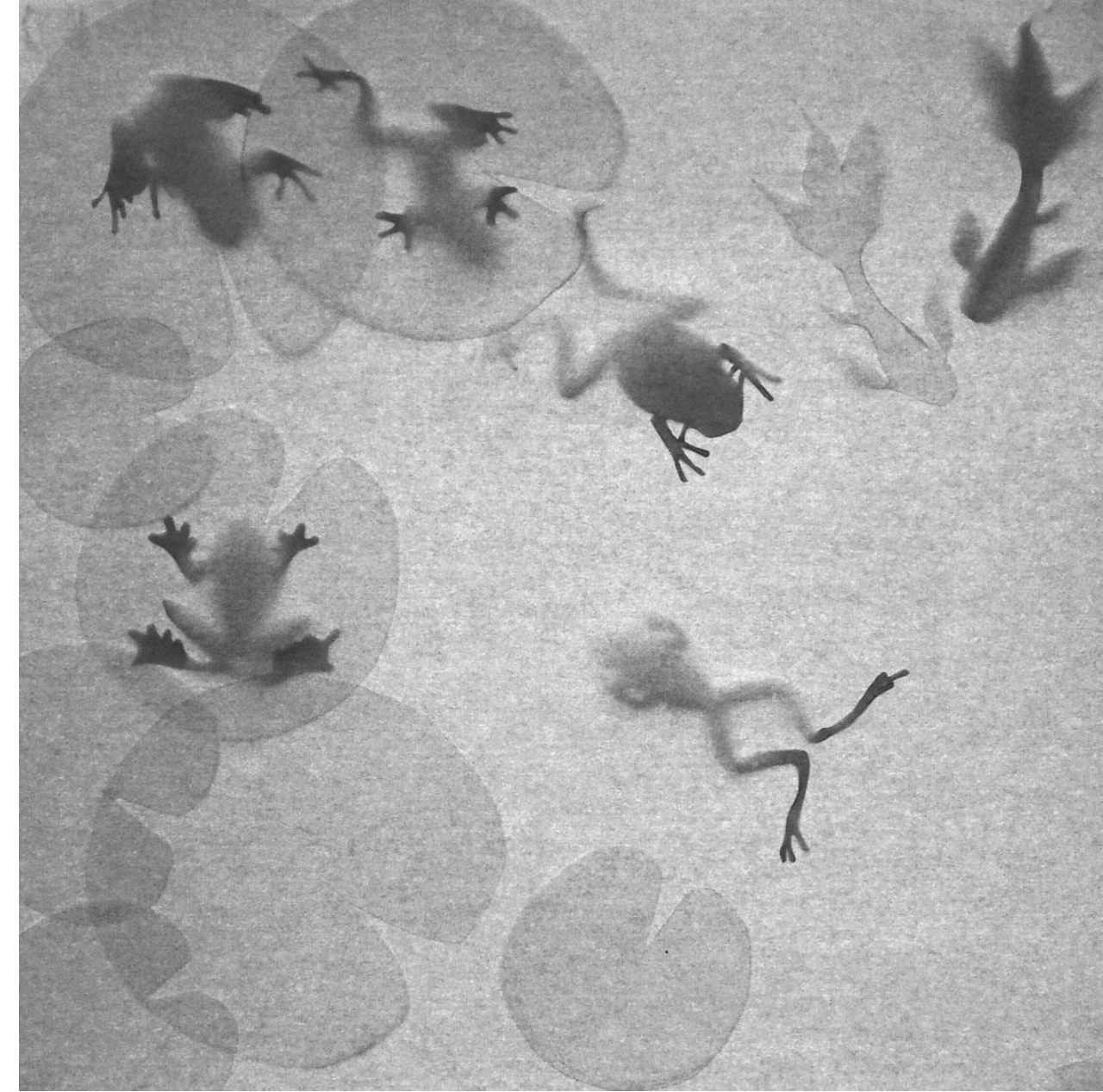


Wiktorja Natalia Ciez



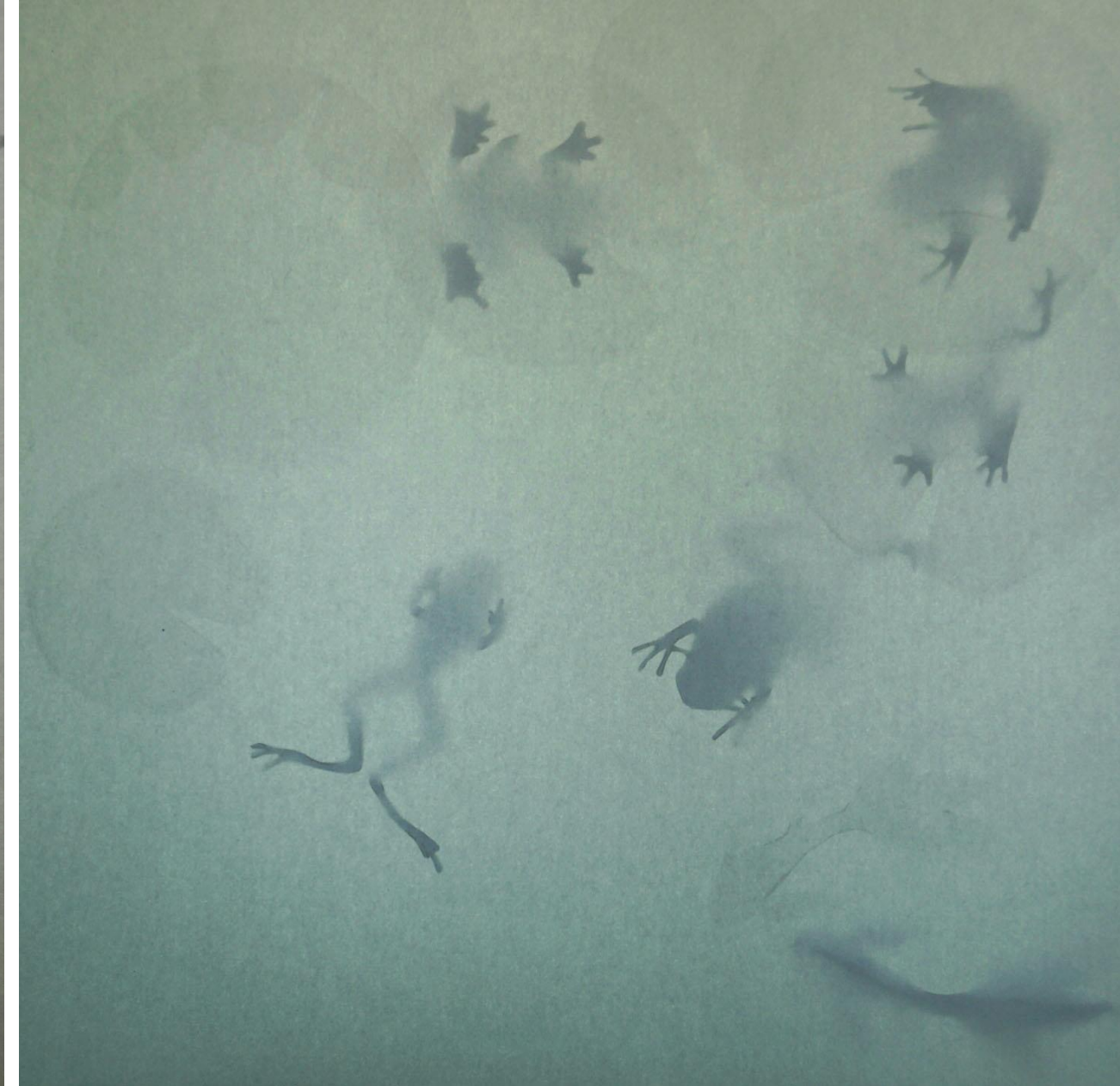
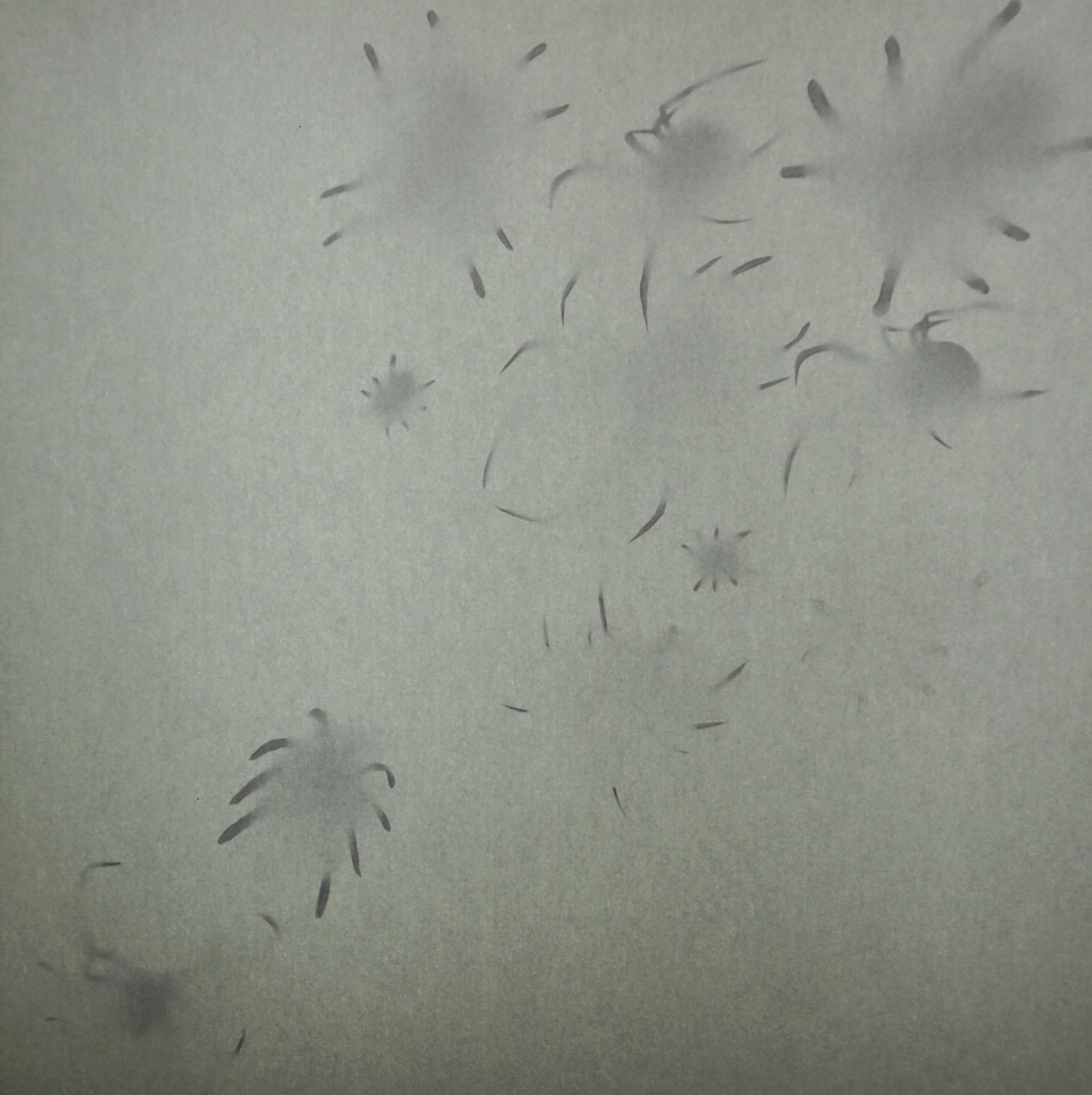


Wiktorja Natalia Ciez



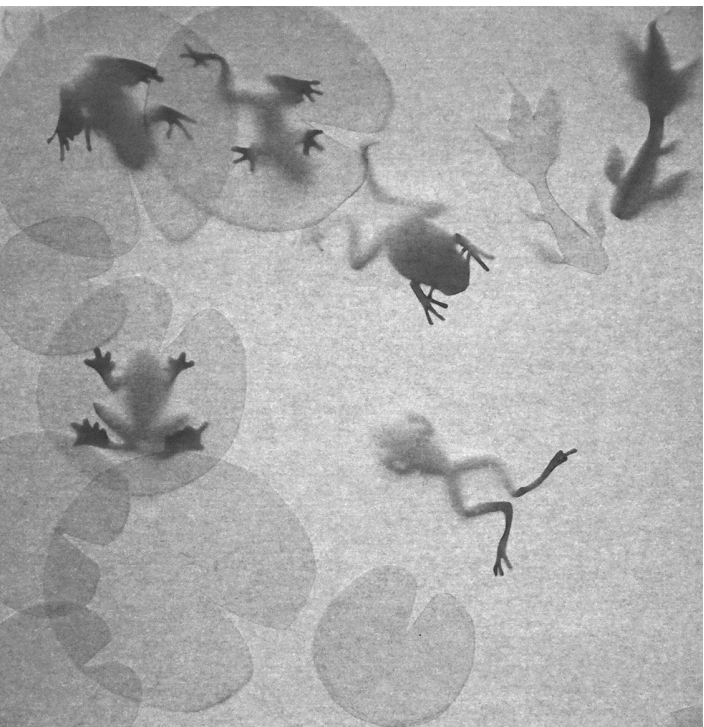
Ventura Sánchez Del Pueyo



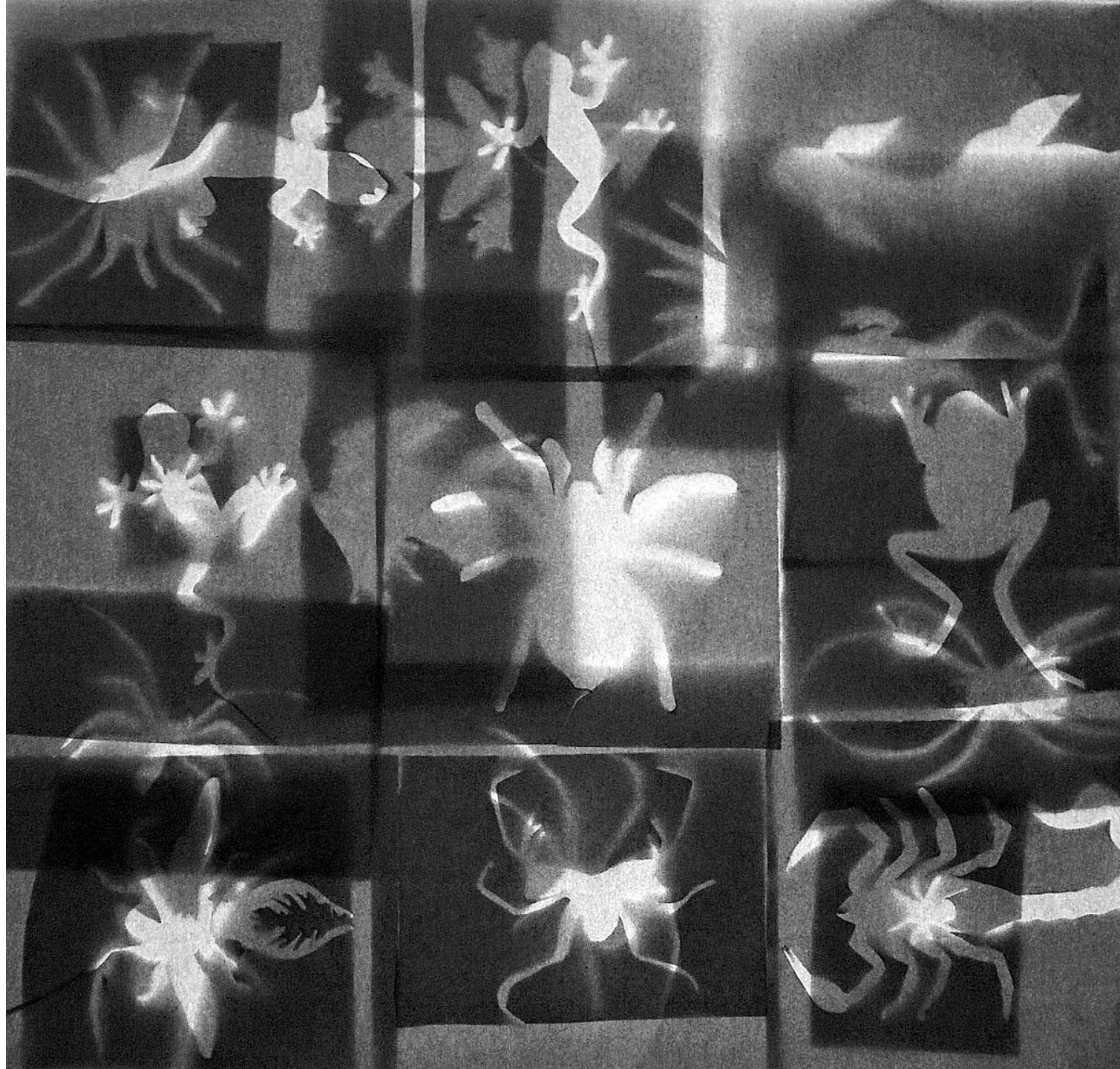


Ventura Sánchez Del Pueyo

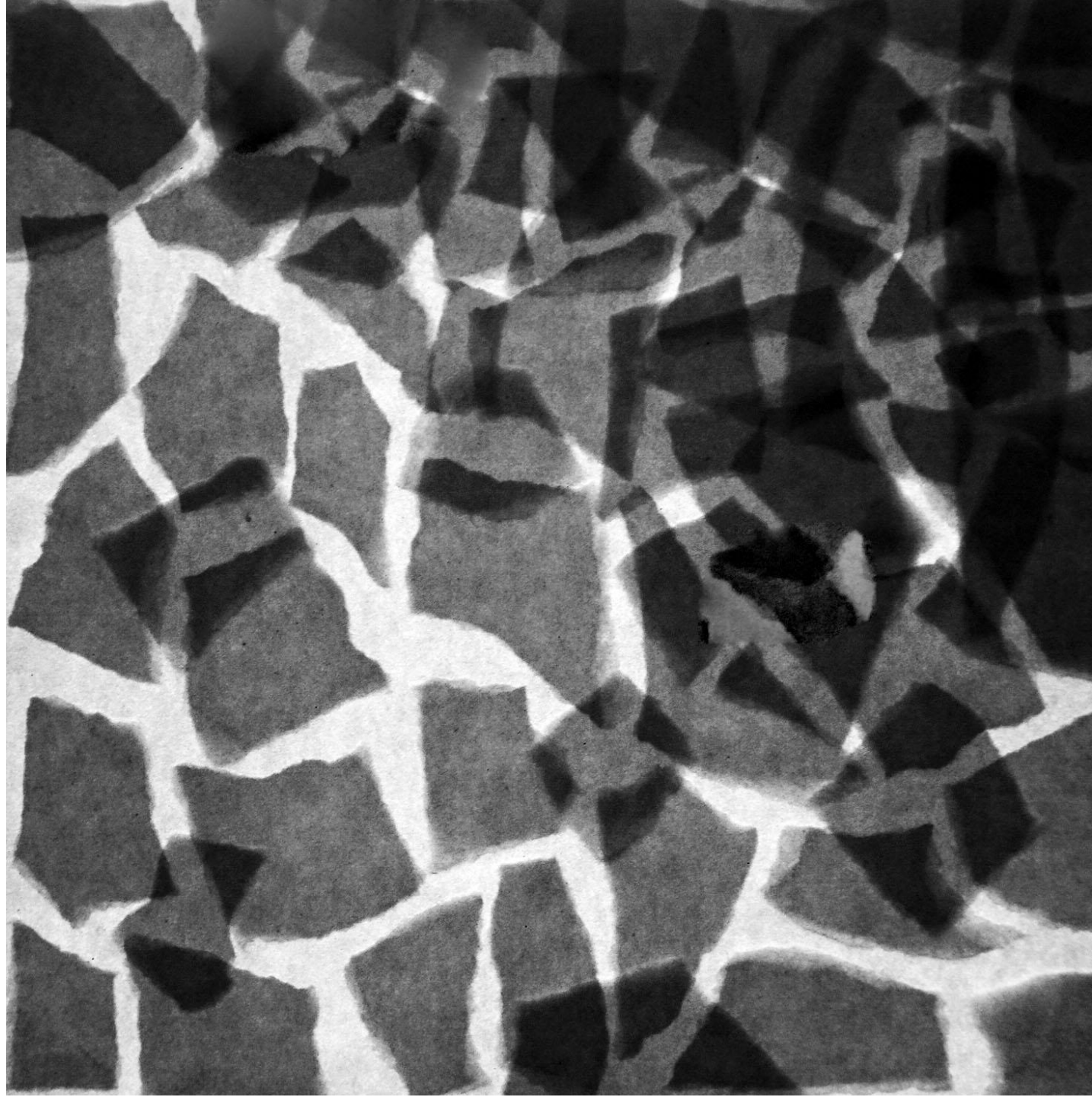




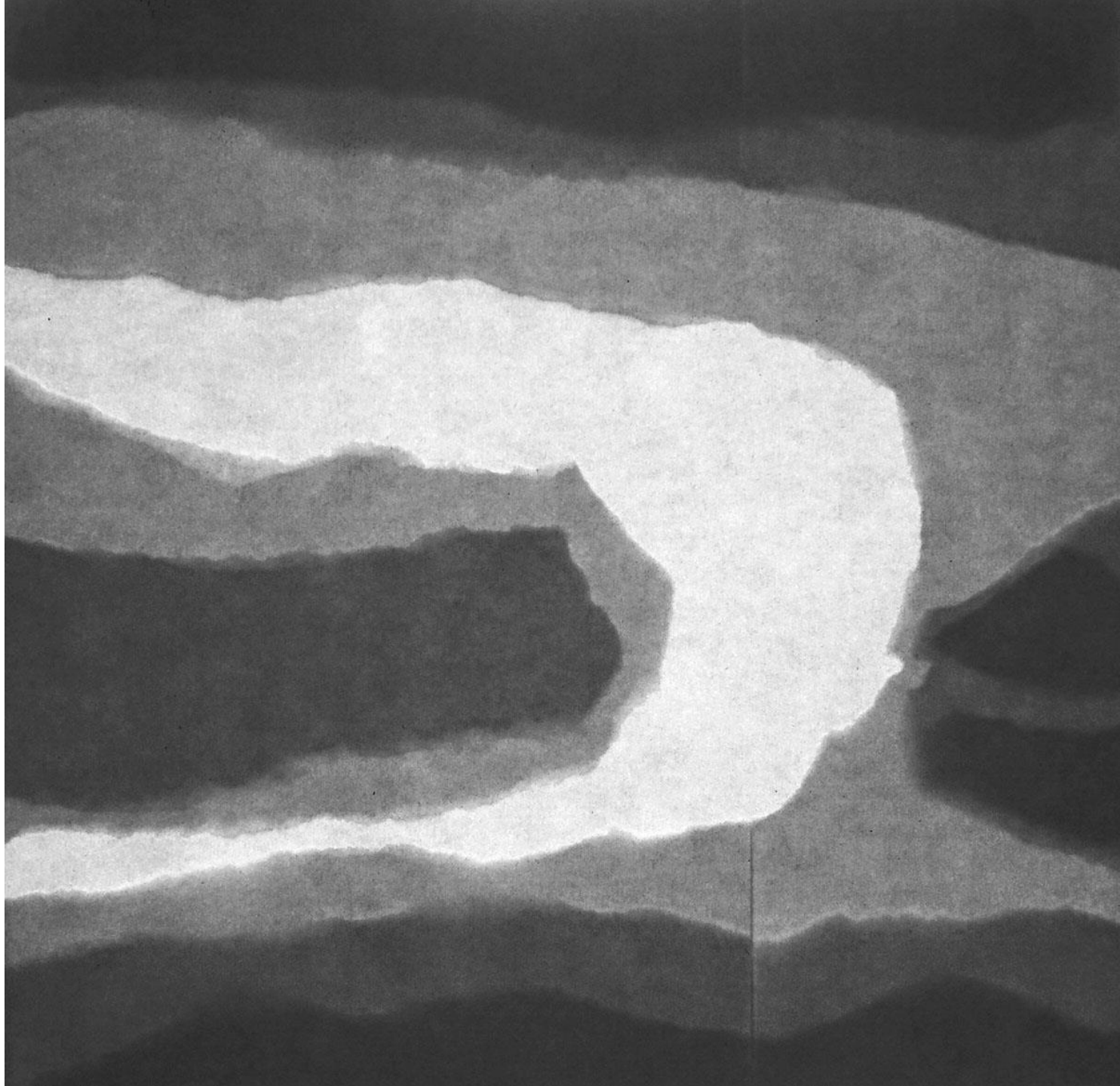
Ventura  
Sánchez Del Pueyo



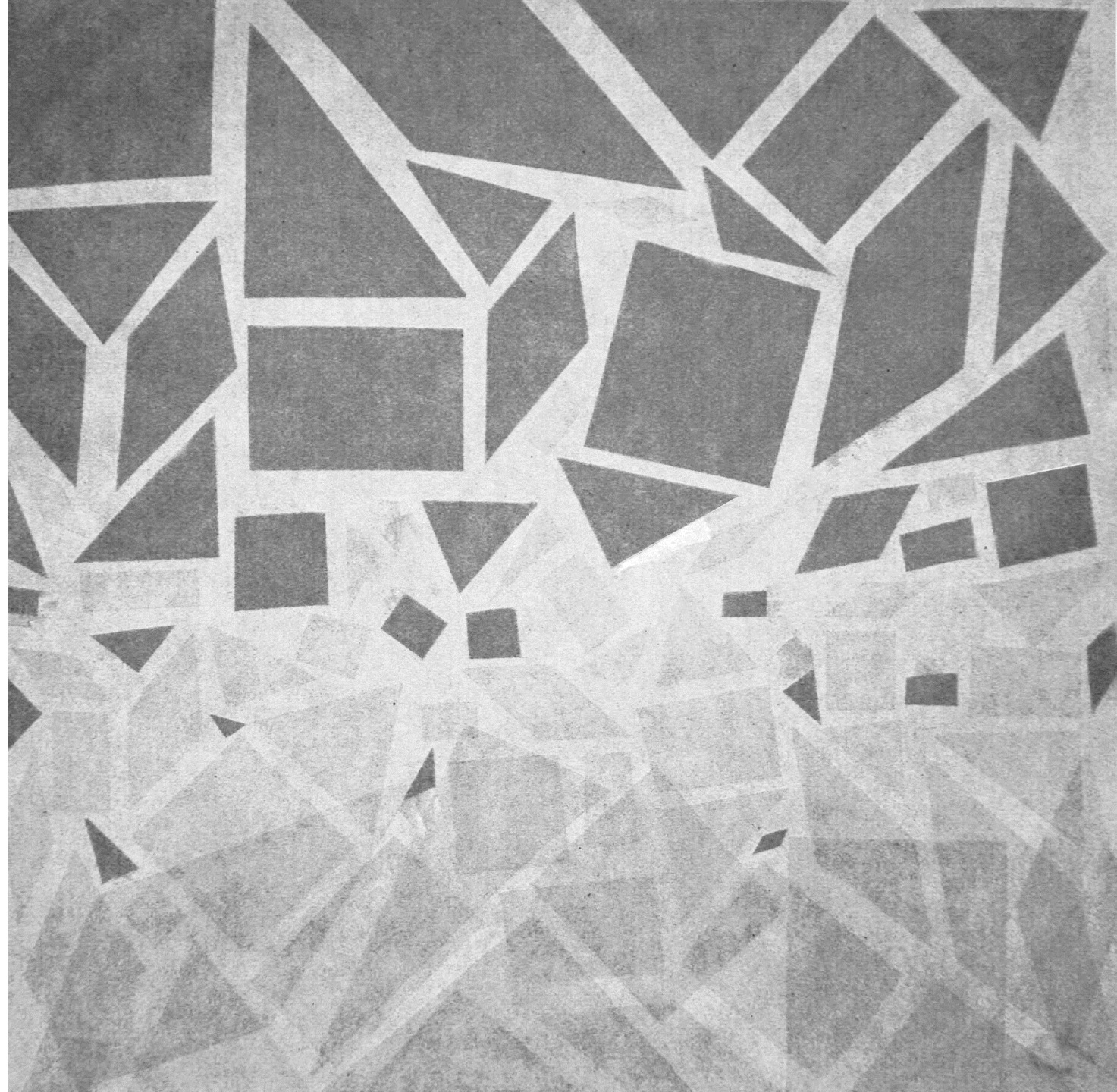
Ane Franco López de Uralde





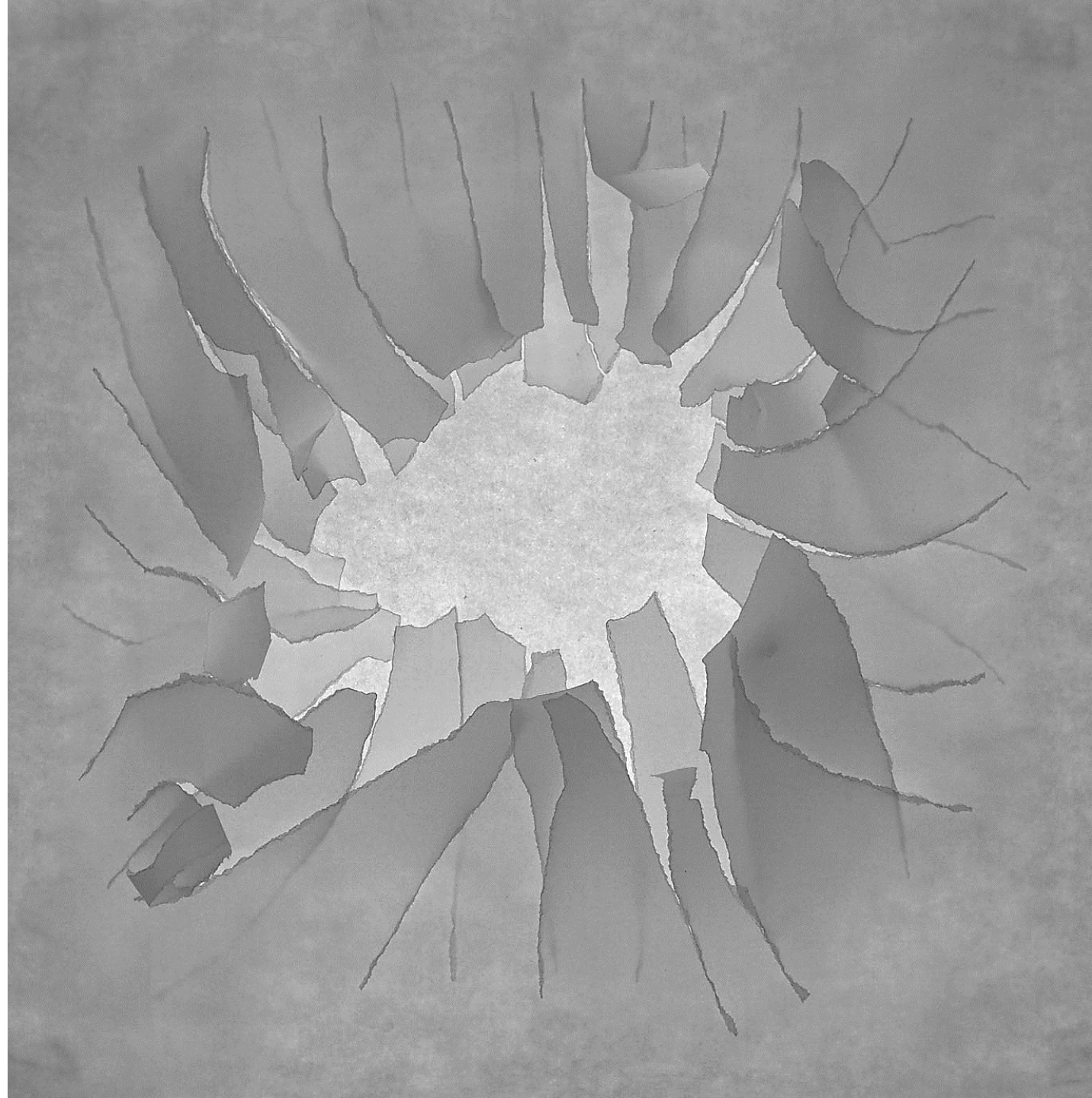


Ane Franco López de Uralde

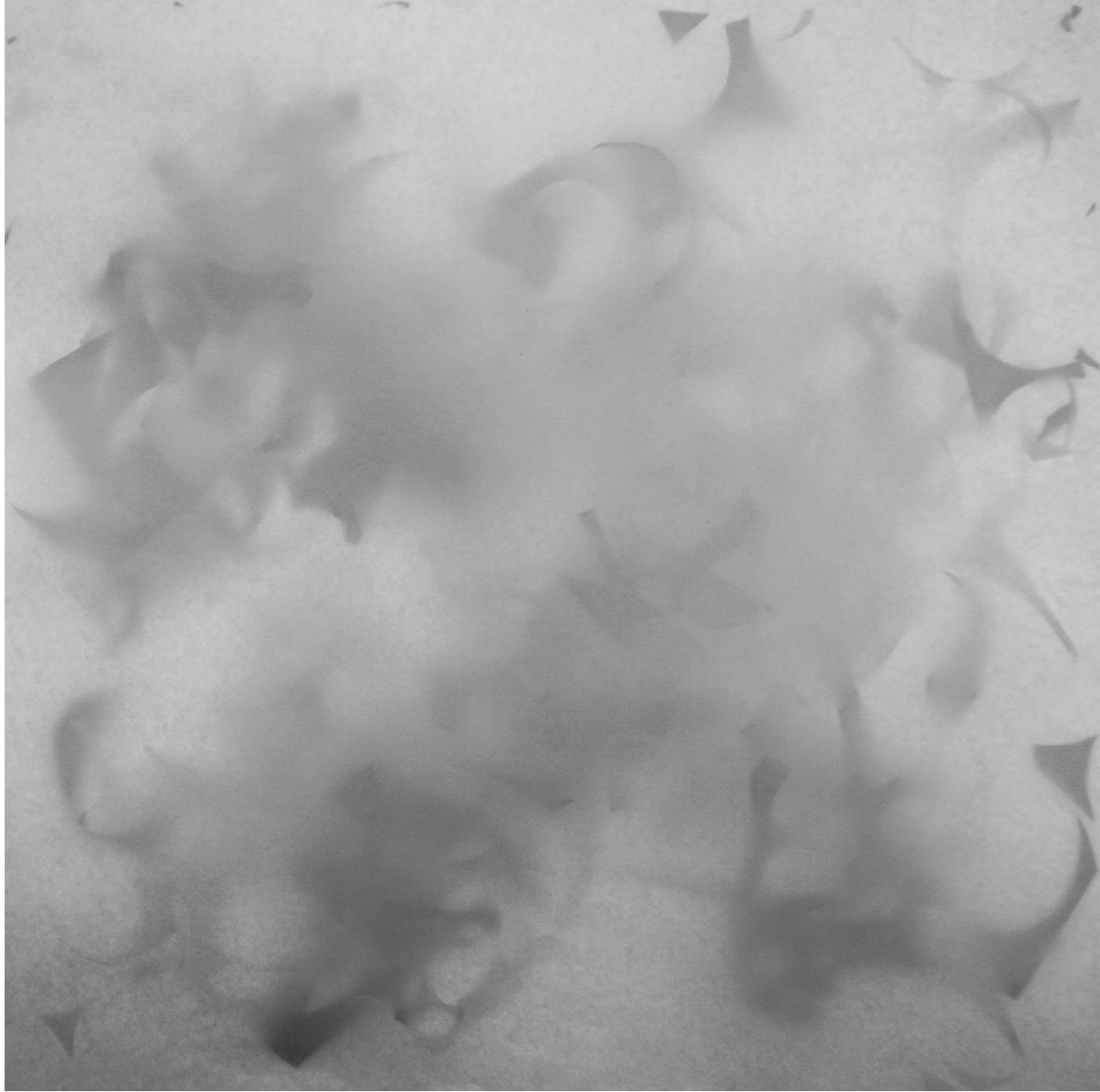


Ane Franco López de Uralde

Ane Franco López de Uralde



Natalia Lasa Souza  
Candela Domínguez Herce





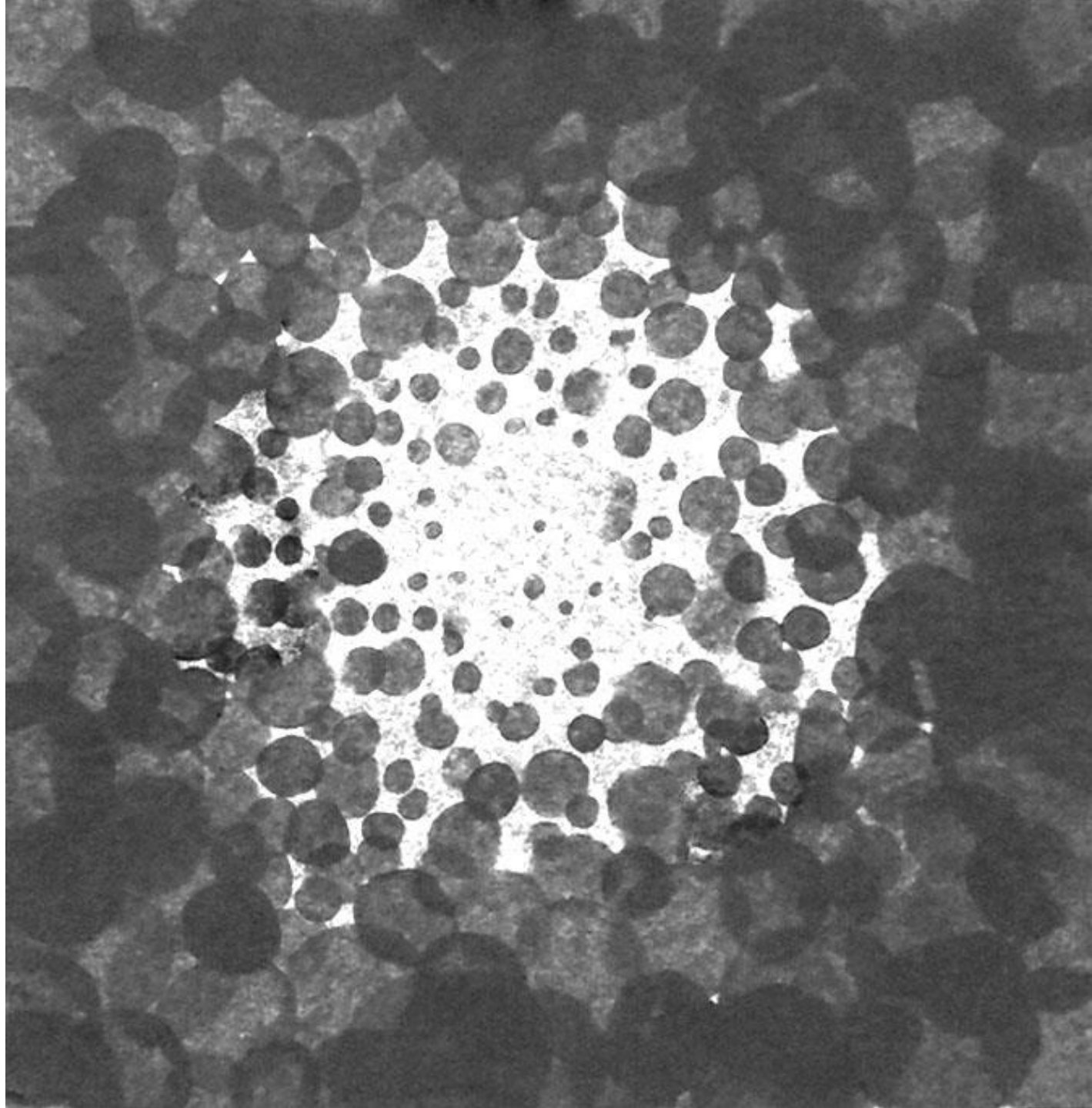


Natalia Lasa Souza  
Candela Domínguez Herce

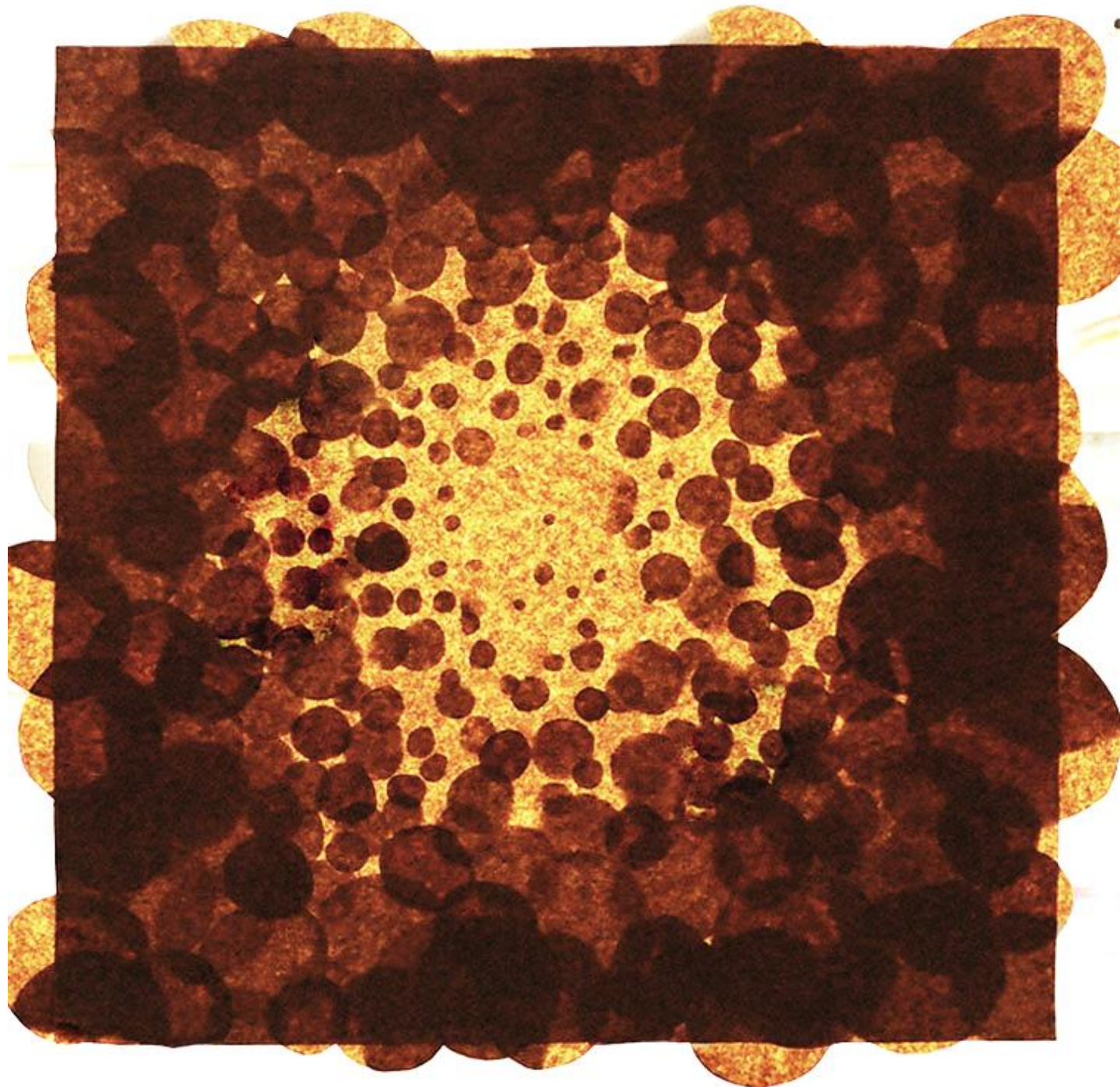


Natalia Lasa Souza  
Candela Domínguez Herce

Natalia Lasa Souza  
Candela Domínguez Herce



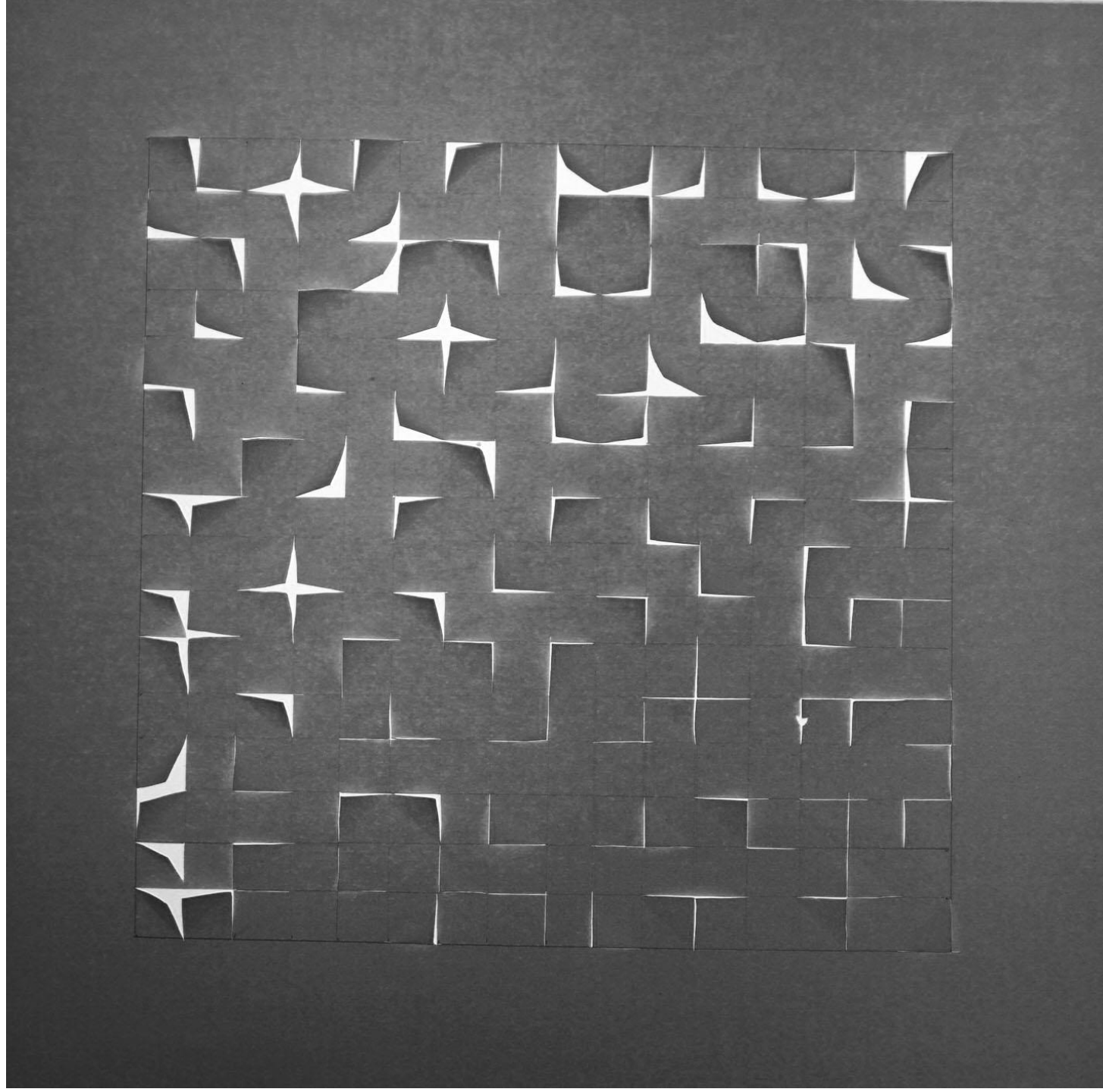


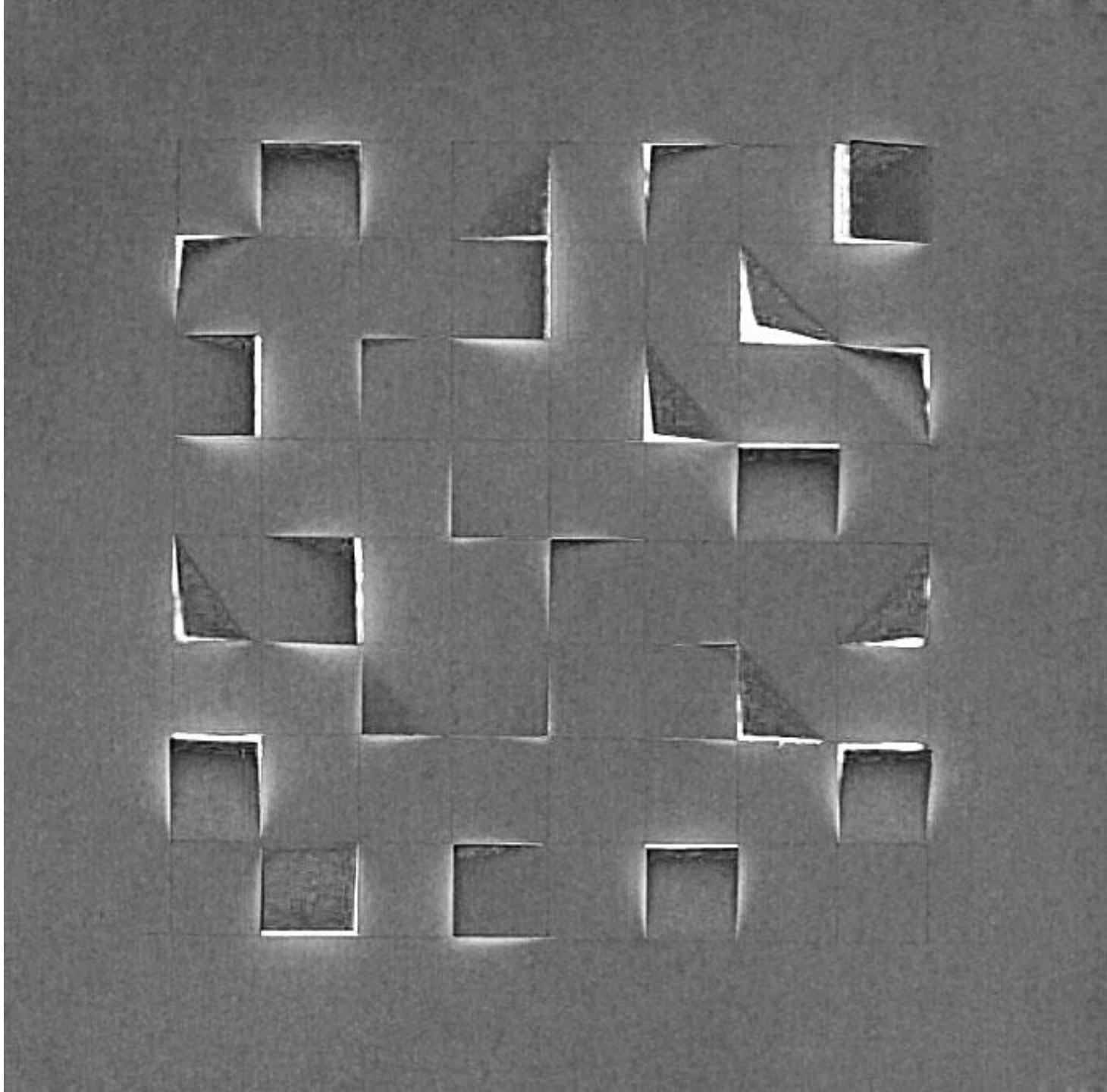


Natalia Lasa Souza  
Candela Domínguez Herce



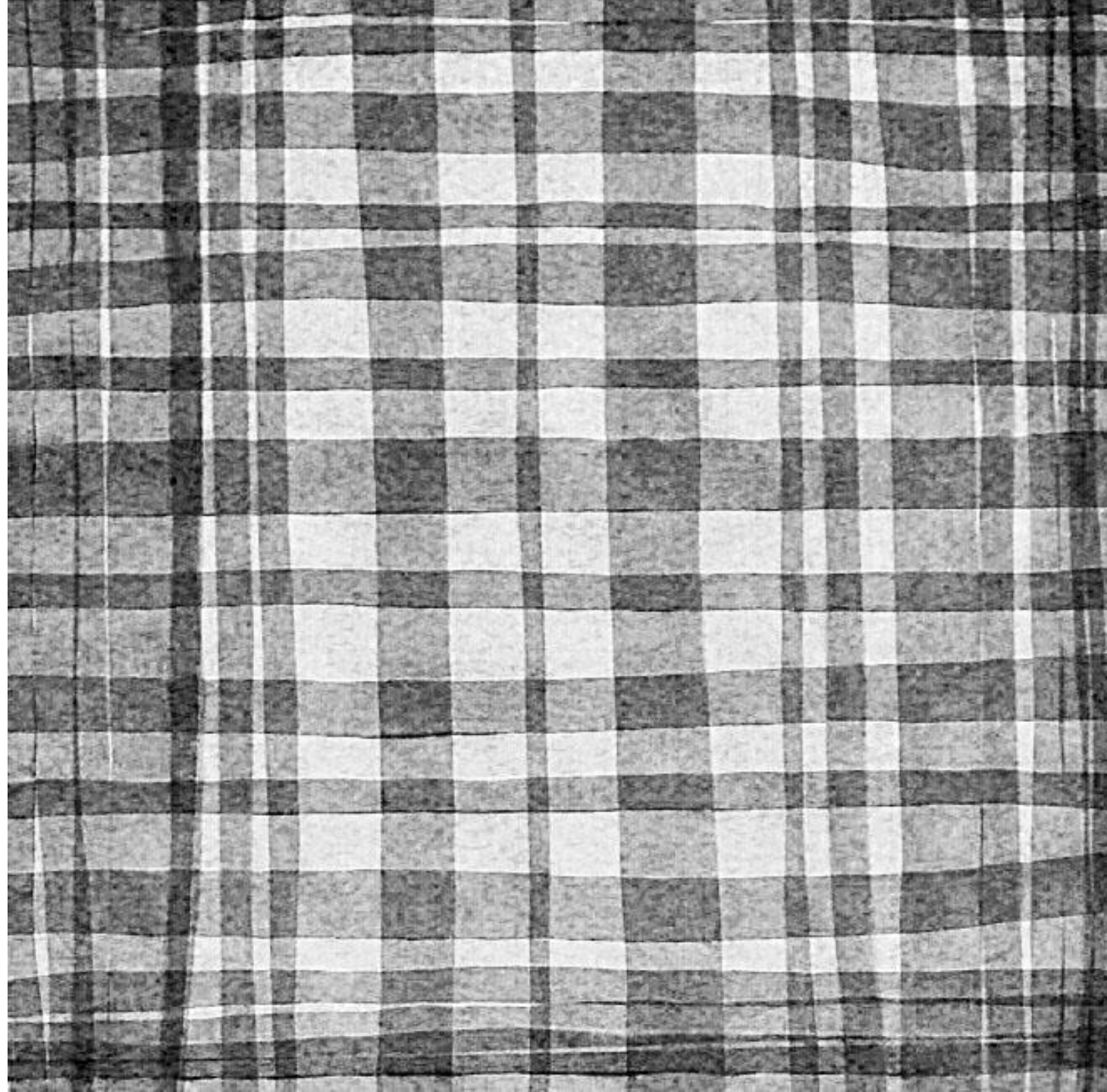
Diana Arteaga

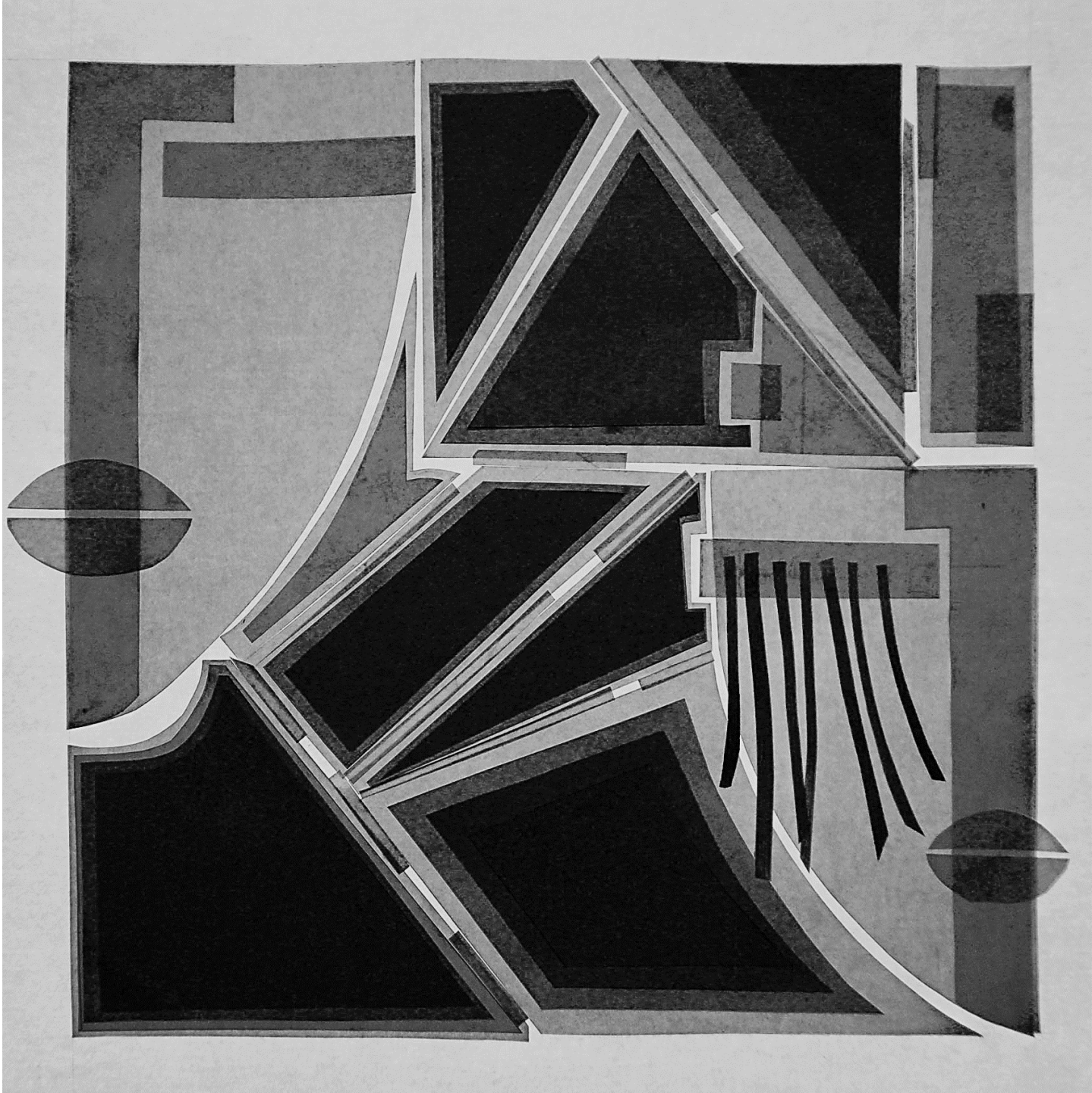




Diana Arteaga

Iraitz Peribáñez Sánchez





Cristina Eleta Olagüe































preparing the exhibition





vernissage





vernissage



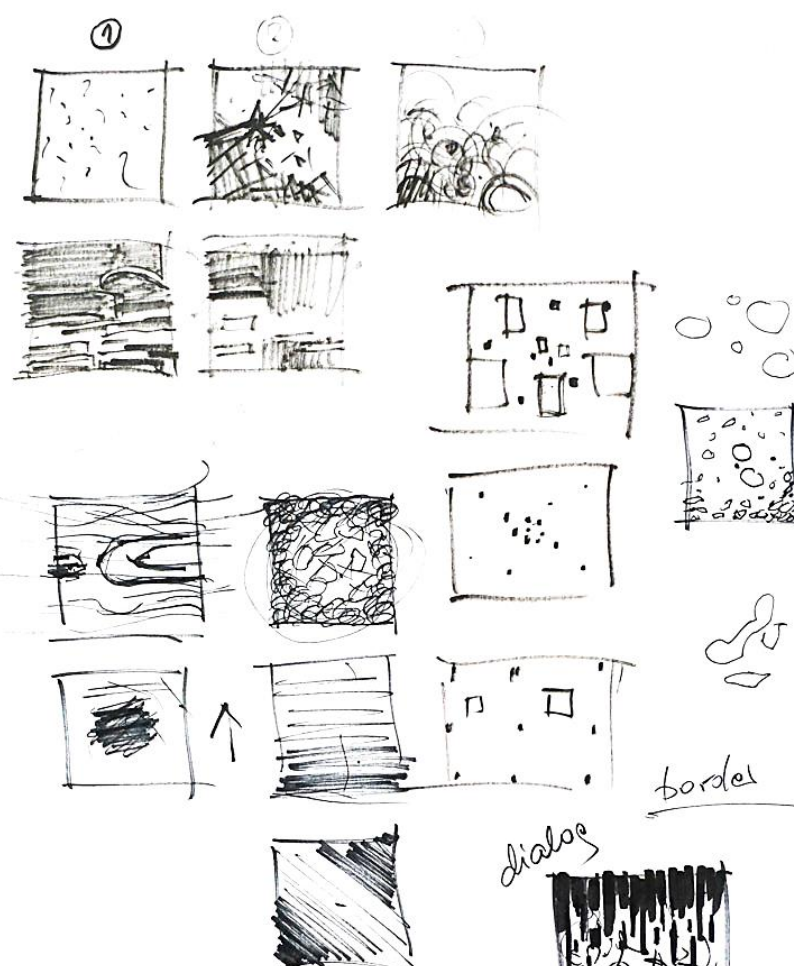
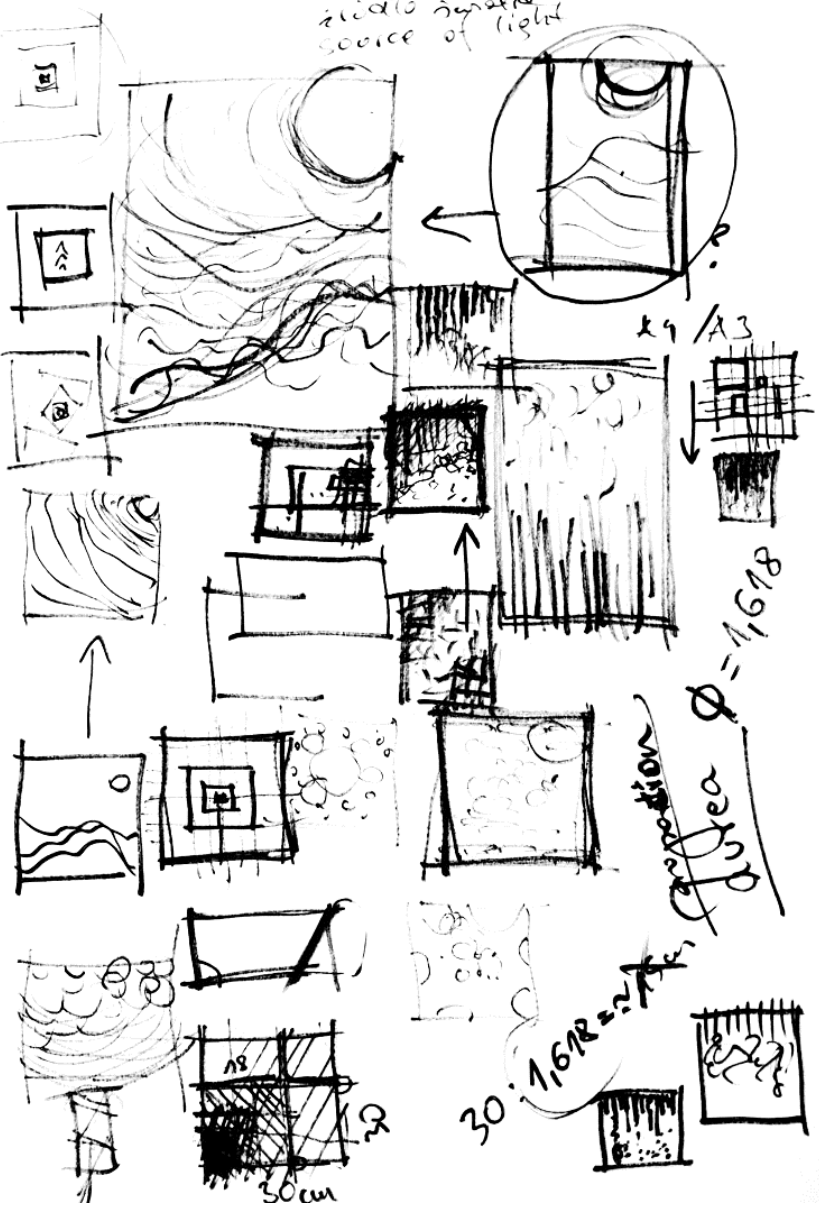








photo negative  
source of light



space  
image of space  
air perspective

dialog

